



Samuel Gray Gardens, KT2

£799,950

A smart and rarely available, three bedroom, two bathroom, first floor apartment set within a prestigious gated riverside development, complete with lift access. This is an ideal home for families or professionals. However, the highlight is the breathtaking river views, whether you're relaxing in the lounge or enjoying a morning coffee on your private balcony, this setting offers a truly special lifestyle.

Tyne House is an enviable riverside location, set directly in front of the River Thames and just a short 500 yard stroll from Kingston town centre. Residents can take advantage of the shopping scene, bars and restaurants and transport links, including Kingston's mainline Train Station.

Features

- River Fronting
- Two Double Bedrooms
- Two Bathrooms
- South/West Facing Balcony
- Immaculate Condition
- Two Private Parking Spaces



Samuel Gray Gardens, KT2

Tyne House is part of an exclusive, gated riverside development offering generous parking areas, including two private, allocated underground spaces. This first floor apartment boasts a stunning outlook over the River Thames, providing a truly picturesque setting.

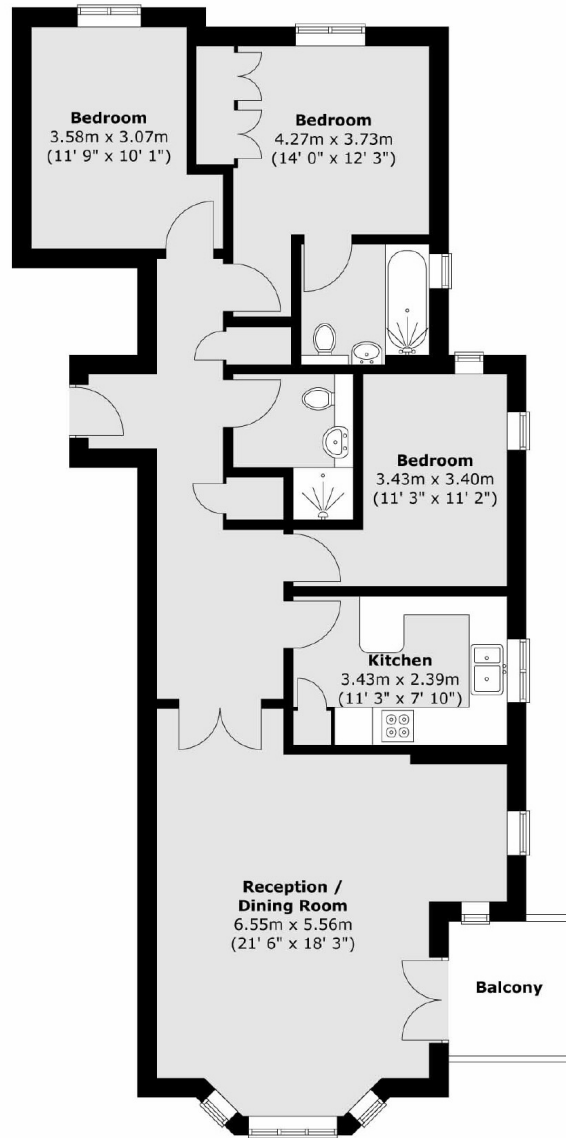
This spacious, single level apartment features three bedrooms and two bathrooms, including an en suite to the principal bedroom. The well sized kitchen provides ample space but the true highlight of any riverside home is the view and this apartment certainly delivers. The bright and airy dual aspect living room boasts stunning river views through a large bay window at the front, while the south-facing side aspect features a door leading onto a private balcony, perfect for enjoying the serene surroundings.

As you pass through the large electric gates, you immediately sense that this is a special place to call home. Set within a quiet and private setting, the development boasts beautifully manicured communal grounds and exclusive residents' access gates that lead directly to the river, offering a tranquil and picturesque lifestyle.



Samuel Gray Gardens, Kingston Upon Thames, KT2

First Floor



Total area (approx.) : 93.2 sq. m (1003 sq. ft)
Total balcony area (approx.) : 4.2 sq. m (45 sq. ft)