



Wendover Drive, KT3

£3,795 Per calendar month

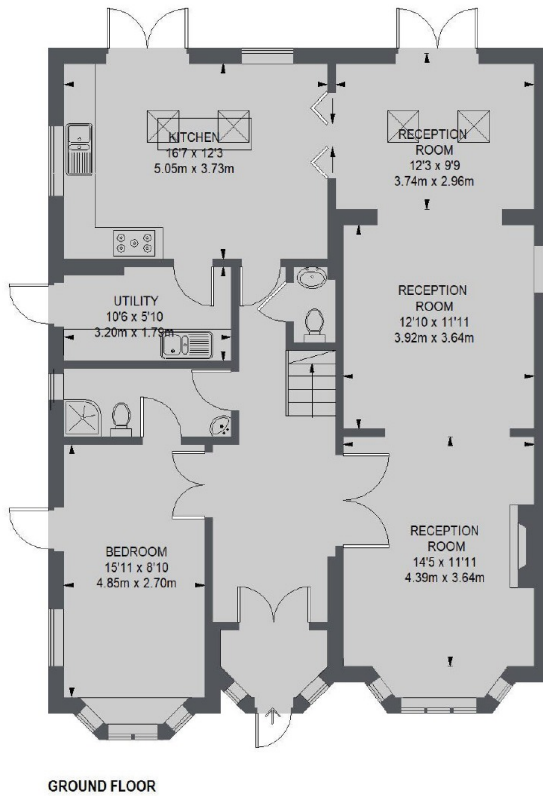
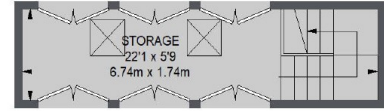
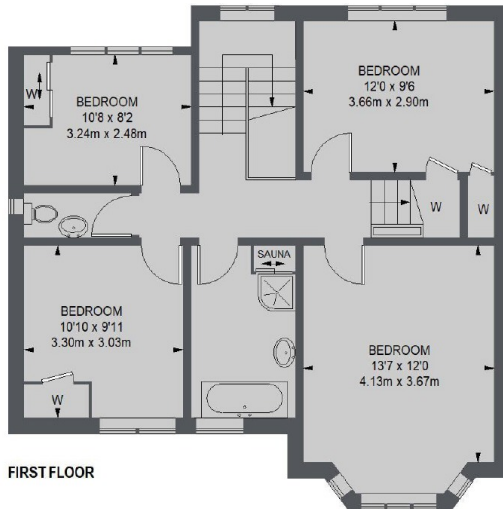
A superb four bedroom detached family with four bedrooms. With off-street parking for multiple cars and a large, landscaped private garden, this is a gem of a family home to grow into.

A stunning four bedroom detached family home, ideally positioned within a short walk to New Malden Town Centre and local amenities.

Features

- Four Bedrooms
- Two Bathrooms
- Modern Kitchen
- Large Garden
- Off Street Parking
- Detached Family Home

Wendover Drive, New Malden, KT3



TOTAL APPROX. FLOOR AREA
2069 SQ. FT. (192.18 SQ. M.)