



## Grove Crescent, KT1

£395,000

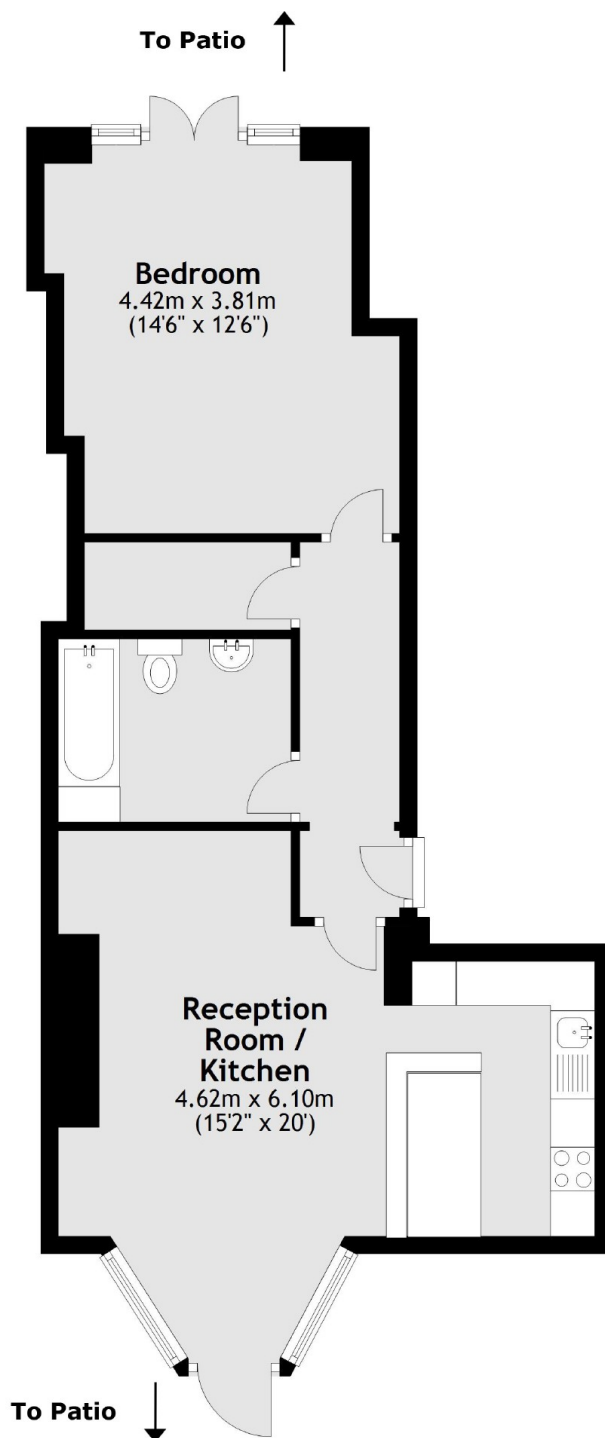
Set within a handsome period building is this lower ground floor Victorian conversion apartment offering approximately 605 sq.ft of bright and spacious lateral accommodation. The property would suit first time buyers, professionals, investors or buyers looking for a safe and secure pied-a-terre.

Grove Crescent is centrally situated within Kingston Upon Thames and is ideally positioned for Richmond Park, the River Thames, Kingston and Surbiton mainline Train Stations. As well as this, the area's extensive shopping and leisure amenities including both High Street and artisan shops, independent coffee shops and fabulous bars and restaurants are only a short stroll away.

### Features

- Period Property
- Two Private Patios Areas
- Allocated Off-Street Parking
- Great Location
- Share of Freehold
- Chain Free

# Grove Crescent, Kingston Upon Thames, KT1



Total area: approx. 56.0 sq. metres (603.1 sq. feet)