



## Albany Mews, KT2

£1,195,000

Tucked away in the corner of this quiet, riverside Mews development is this beautiful four bedroom family home arranged over three floors with two bathrooms and a ground floor WC. The accommodation is bright and airy throughout and due to the location, this house has the added benefit of off street parking for multiple cars and a large double garage to the side which also offers potential to extend subject to the usual permissions.

Albany Mews is an exclusive, attractive, riverside development with direct access to the towpath along the River Thames and close to Canbury Gardens. You can take a short half a mile riverside stroll to Kingston town centre and the development is conveniently positioned for a number of excellent local private and public schools.

### Features

Four Bedrooms  
Large Sitting Room  
Kitchen/Dining Room  
Two Bathrooms  
Double Garage  
Potential To Extend (STPP)



## Albany Mews, KT2

On the ground floor to the front is the large, double aspect sitting room and to the rear is the smart, modern kitchen/dining room that overlooks and has direct access to the garden. There is also the added convenience of a ground floor WC.

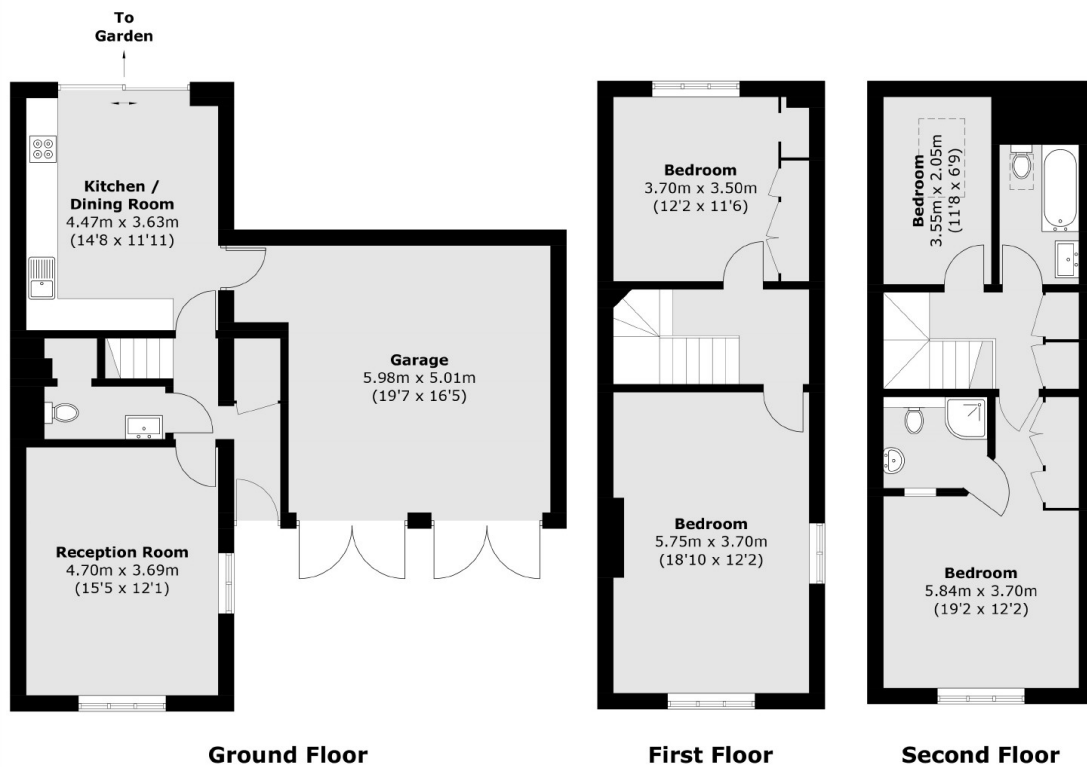
On the first floor are two of the four double bedrooms and stairs leading to the top floor. Here you will find the principal bedroom to the front with a generous en suite bathroom, a family bathroom and the fourth bedroom is located to the rear.

Outside is the unusually wide frontage due to the double garage with twin doors to the side. There is also ample off-street parking located in front of the garages. To the rear is the pretty garden with an easily maintained artificial lawn and patio area to the which is well secluded by an attractive brick wall.





# Albany Mews, Kingston Upon Thames, KT2



Total area (approx.): 155.6 sq. m (1,674.8 sq. ft)  
(Including Garage)