



## Richmond Road, KT2

### £450,000

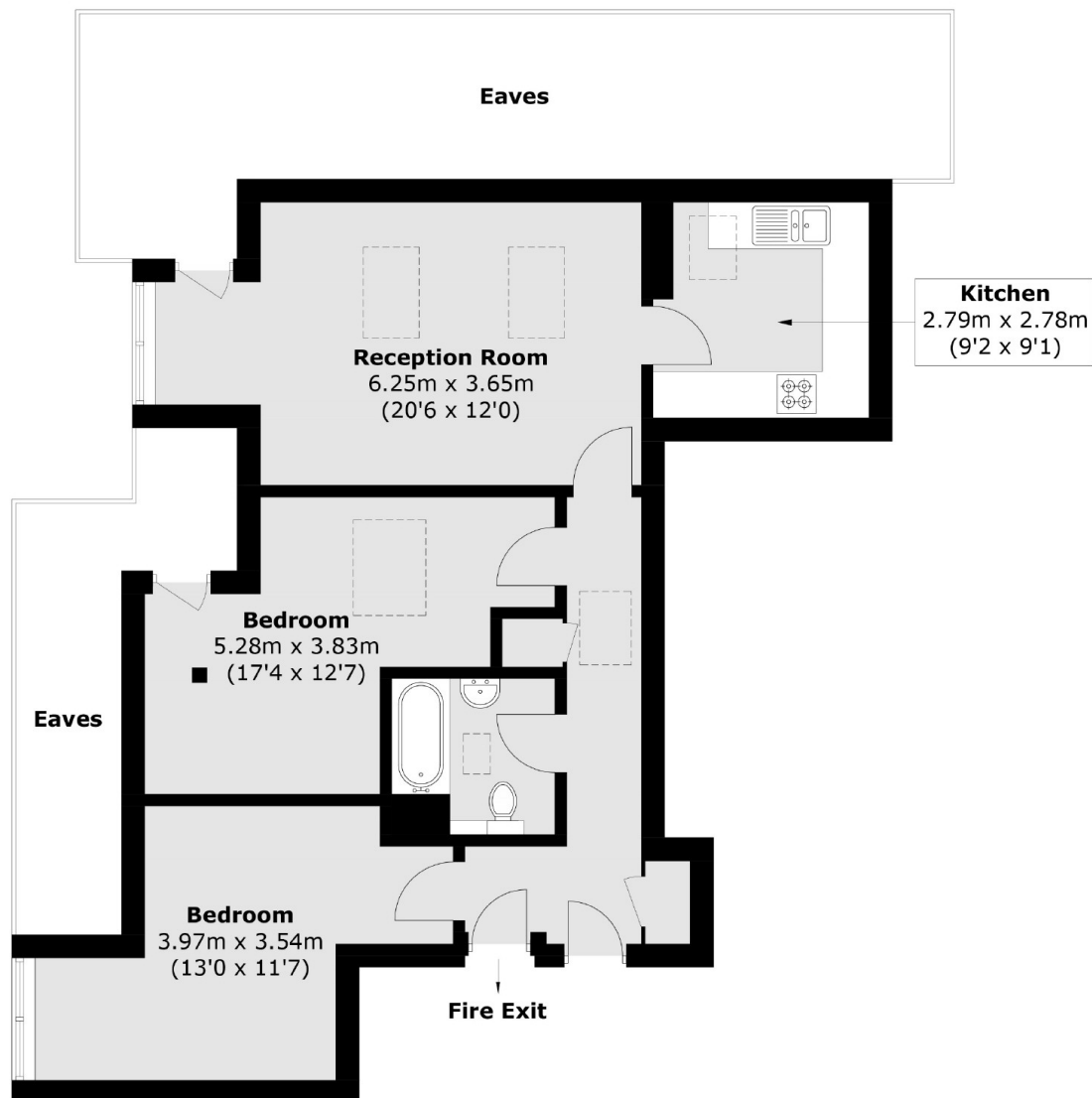
A well presented top floor with loft storage situated off the Richmond Road, close to Ham Parade. The property offers over 700 sq.ft of accommodation and would suit first time buyers, families, investors or buyers looking for a pied-a-terre.

Ideally located on Richmond Road, North Kingston. The property is a stone's throw from the Thames towpath, Ham's Meadowlands and local retail facilities on Ham Parade. Transport links include regular bus services, rail and tube connections. The property falls within the catchment area of Ofsted rated Outstanding Schools.

### Features

- Top Floor
- Two Double Bedrooms
- Allocated Parking
- Great Location
- Lift
- Chain Free

# Richmond Road, Kingston Upon Thames, KT2



Total area (approx.): 71.3 sq. m (767.5 sq. ft)  
(Excluding Eaves)