



Cambridge Road, KT1

£269,950

A spacious lower ground floor apartment with a large open plan kitchen/living room with direct access onto a small private patio area. This well presented flat is a great rental opportunity, with proven rental income, has no onward chain, allocated parking and a share of freehold.

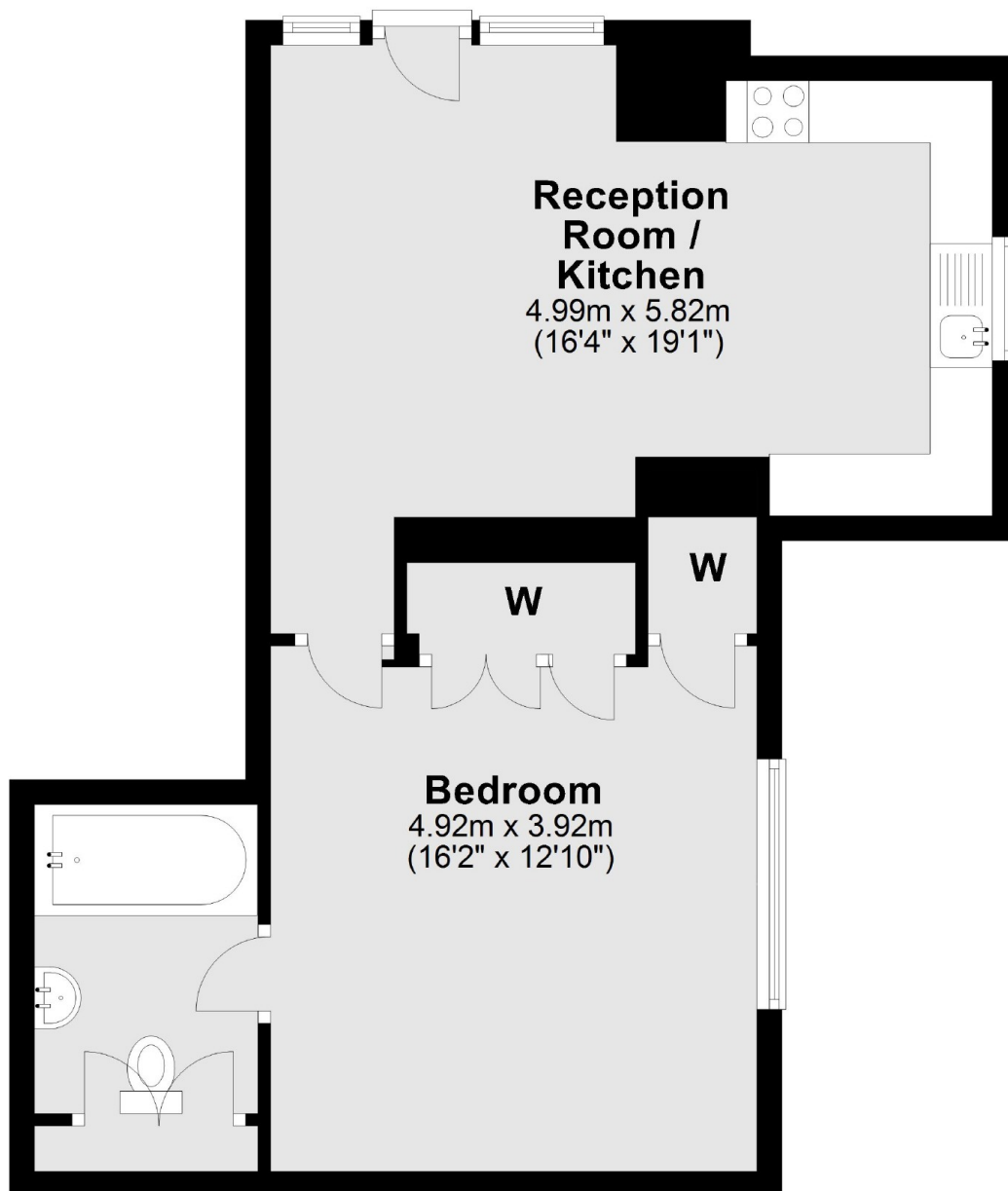
Close to Norbiton Station and Kingston town centre with its a huge variety of shops, a daily market and an array of riverside bars and restaurants.

Features

- Large Double Bedroom
- Share Of Freehold
- Private Entrance
- Allocated Parking Space
- Private Patio Area
- Communal Garden

Cambridge Road, Kingston Upon Thames, KT1

Ground Floor



Total area: approx. 49.1 sq. metres (528.7 sq. feet)