



Ullswater Crescent, SW15

£1,495,000

This wonderful five bedroom, three bathroom, detached family home has been subject to a total renovation and is now offered with no onward chain and with all the benefits of a new build. The house is perfect for a large family and for those wanting to work from home as there is a sixth bedroom/study located on the first floor to offer further flexibility.

Ullswater Crescent is located in a popular residential area of Kingston Vale which is situated between Richmond Park and Wimbledon Common. There is easy access to the A3 for those needing vehicle access into and out of London. Wimbledon, Putney and Kingston town centres are all equidistant from the house.

Features

- Five/Six Bedrooms
- Large Double Reception Room
- Large Private Garden
- Off-Street Parking
- Three Bathrooms
- Newly Refurbished



Ullswater Crescent, SW15

As soon as you approach this impressive house the quality and modern design is apparent with the crisp flat render and stylish black windows. The driveway is a newly laid brick surface and the area is softened by the lawn and mature shrub border.

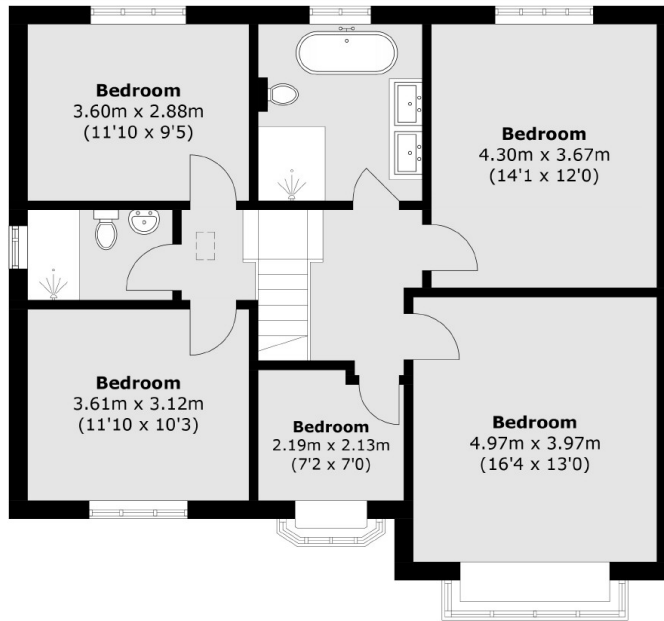
As you enter the house, you are greeted by the large entrance hall and the very smart wood and glass floating staircase. To the right hand side is the large double reception room with windows to the front and large sliding patio doors that lead onto the rear garden. At the end of the hallway is the dining area which is also open plan to the smart, modern kitchen. There is underfloor heating throughout the ground floor and there is also a large utility room and separate ground floor WC. Finally, there is also a large double bedroom with an en suite bathroom also located on the ground floor.

On the first floor are four double bedrooms and two beautiful bathrooms. In addition, and depending on your requirements, there is the sixth bedroom/home office.

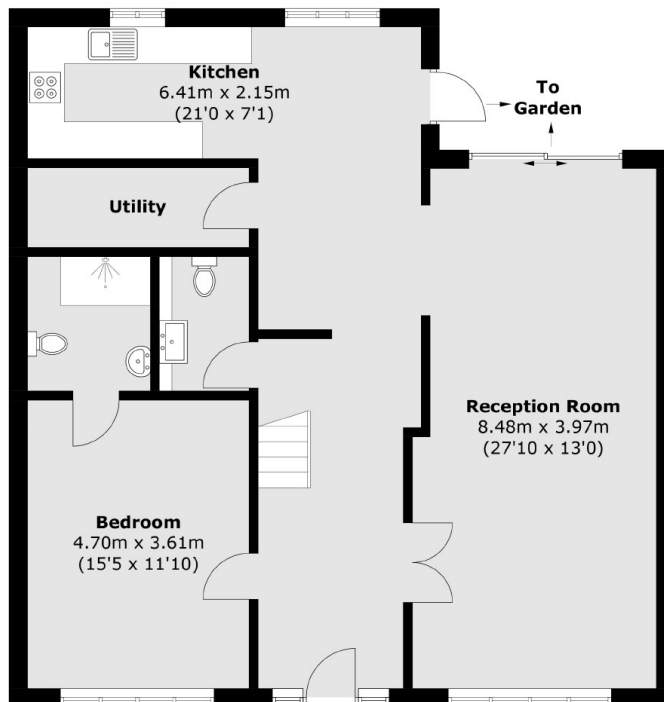
Outside to the rear is the newly laid, well secluded, private garden with added privacy provided by a selection of mature trees and shrubs to all three sides.



Ullswater Crescent, London, SW15



First Floor



Ground Floor

Total area (approx.): 188.0 sq. m (2,023.6 sq. ft)