



## Nicholson Mews, KT1

£825,000

A four bedroom Mews house perfect for a growing family. Nestled in a quiet residential development off Geneva Road, the property is on a quiet cul-de-sac.

Nicholson Mews is close to both Surbiton and Kingston town centres with their array of shops and vibrant range of bars and restaurants, Surbiton Train Station with it's fast train into London is also close by.

### Features

- Four Bedrooms
- Private Development
- Double Glazing
- Private Garage
- Sought After Location
- Great School Catchment





## Nicholson Mews, KT1

Entered via a large hallway, the ground floor has a great size eat in kitchen, a guest cloakroom and to the rear is a large family room that opens up onto the bright conservatory, a great way to enjoy the natural light and views from the well maintained garden. Outside, the rear garden has space for a trampoline as well as a seating area.

The superb proportions continue to the first floor with two large double bedrooms, one being the principal bedroom that has an en suite bathroom. There is also a family bathroom on this floor.

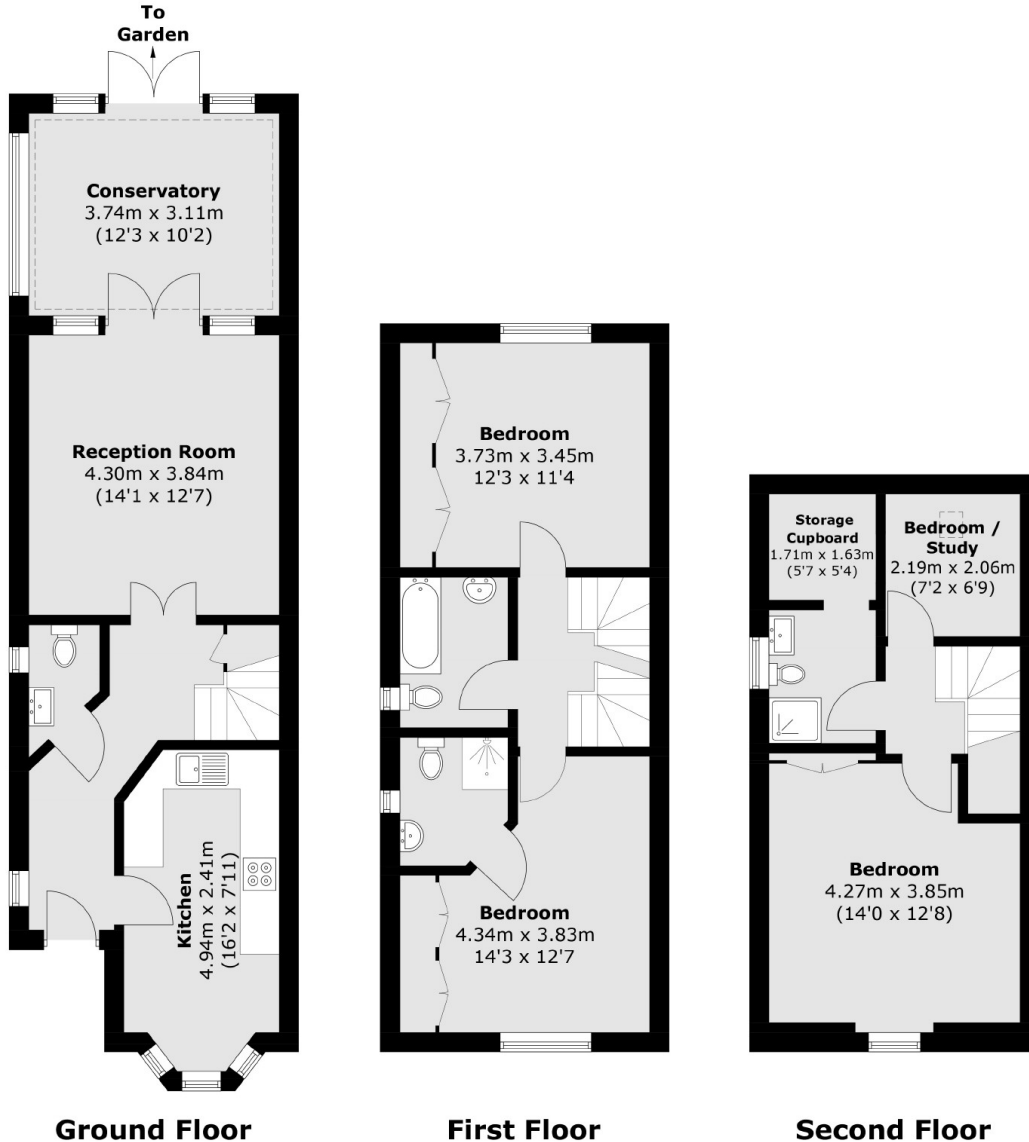
The top floor has two bedrooms plus another family bathroom. There is even more storage in the loft, as well as a garage opposite the property.







# Nicholson Mews, Kingston Upon Thames, KT1



Total area (approx.): 125.3 sq. m (1,348.7 sq. ft)