



Hampden Road, KT1

£2,250 Per calendar month

A collection of six stylish and spacious two bedroom, two bathroom apartment offering ample living space presented in immaculate condition throughout. This stunning apartment includes private allocated parking, bike storage and a good size balcony.

Hampden Road is centrally situated for Norbiton mainline station, Richmond Park, the River Thames and the extensive shopping, leisure and travel amenities of Kingston town centre with over 300 stores, a bustling market place as well as a vibrant offer of independent shopping.

Features

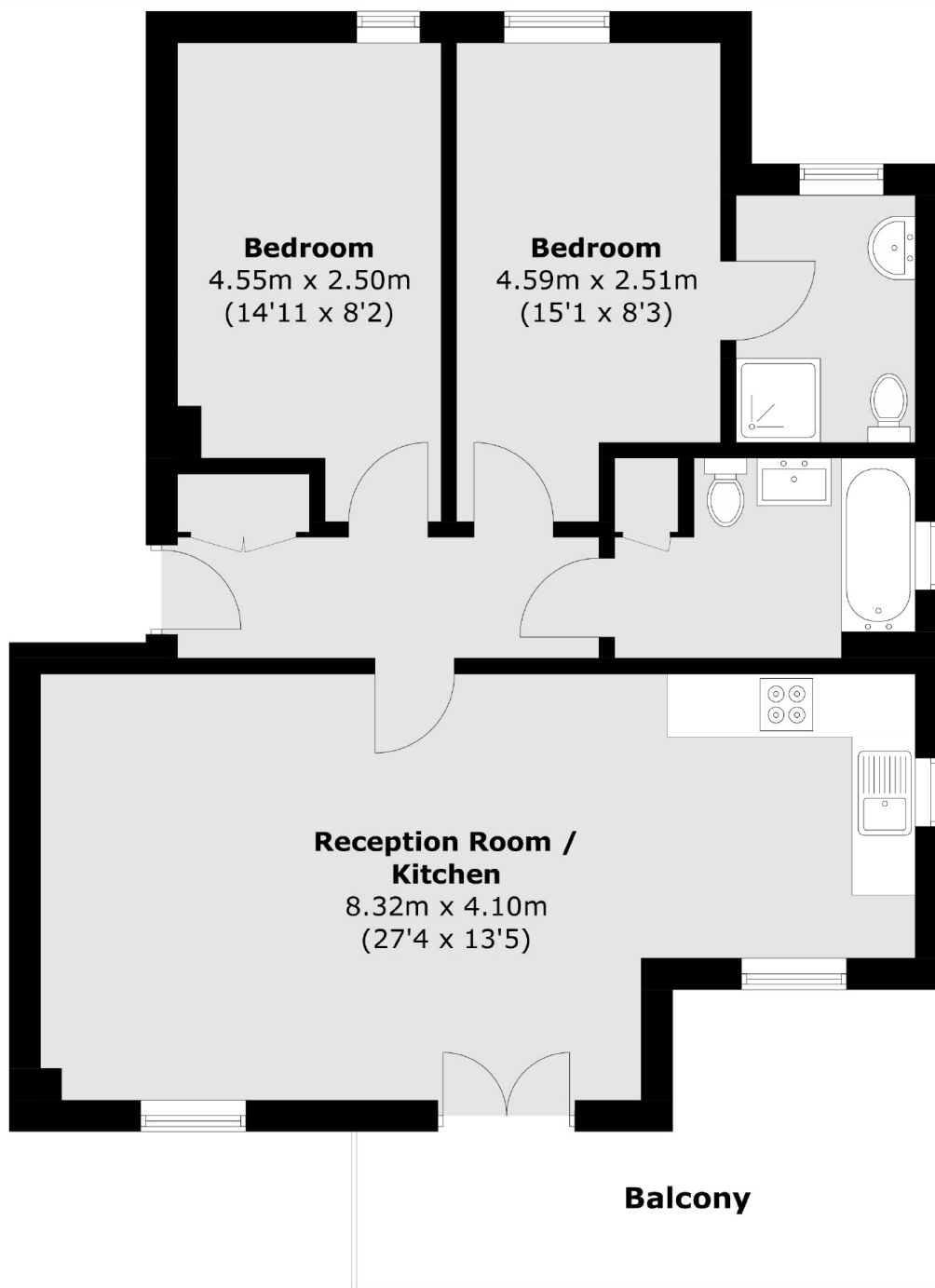
- Two Bedrooms
- Two Bathrooms
- Stylish and Luxurious Interiors
- Private Allocated Parking
- Gated Development
- New To The Rental Market



Hampden Road, KT1



Hampden Road, Kingston Upon Thames, KT1



Total area (approx.): 69.7 sq. m (750.2 sq. ft)
Balcony: 11.8 sq. m (127.0 sq. ft)