



## Sopwith Close, KT2

£325,000

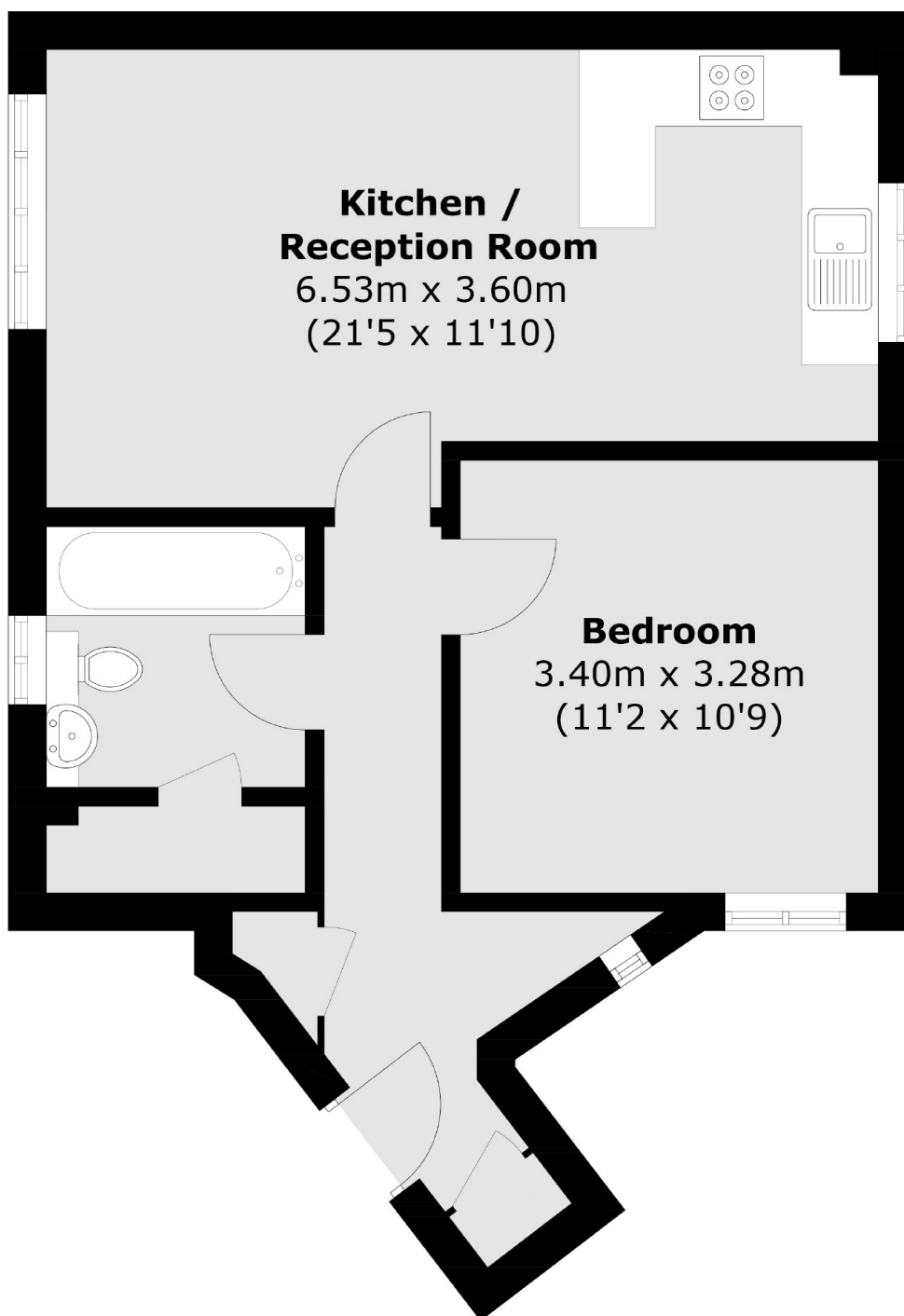
A larger than average one double bedroom apartment located on the first floor of this low rise building. The current owner has recently decorated resulting in this lovely, bright and spacious accommodation. In addition, there is direct access to the loft space and allocated parking.

Sopwith Close is part of a small residential development with Richmond Park in the background. This quiet location is also well placed with the Ham Gate entrance to Richmond Park less than half a mile away. Also within a mile is Ham Common, Ham Parade and the banks of the River Thames with a pretty walk towards Richmond or Kingston.

### Features

- One Double Bedroom
- First/Top Floor
- Newly Decorated
- Bright And Spacious
- Loft Storage
- Allocated Parking Space

# Sopwith Close, Kingston Upon Thames, KT2



Total area (approx.): 48.0 sq. m (516.7 sq. ft)