



Kingston Road, KT1

£249,950

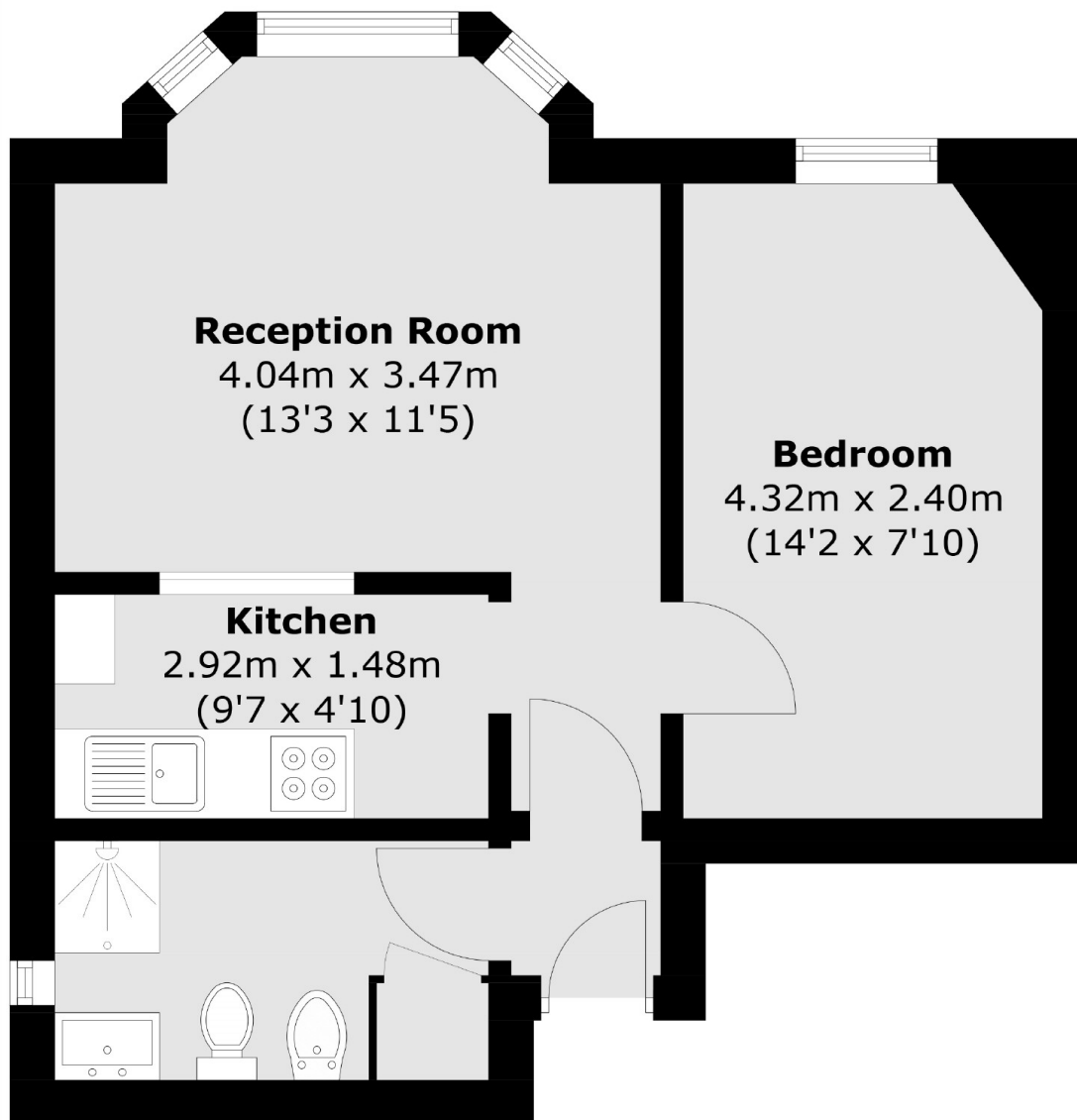
A fantastic double bedroom first floor period conversion set within a detached Victorian building offering approximately 400 sq ft of accommodation. The property is in excellent condition throughout and is a superb opportunity for first time buyers or investors.

Kingston Road is a popular residential road ideally located for Norbiton station, the River Thames and Richmond Park's Kingston Gate, which offers over 2,500 acres of Royal parkland to enjoy. Access to both Kingston and New Malden centres are incredibly convenient offering a wide range of shopping and entertainment amenities.

Features

- One Double Bedroom
- Reception Room
- Partially Open Plan Kitchen
- Modern Shower Room
- First Floor
- Share Of Freehold

Kingston Road, Kingston Upon Thames, KT1



Total area (approx.): 36.4 sq. m (391.8 sq. ft)