



## New Road, KT2

£475,000

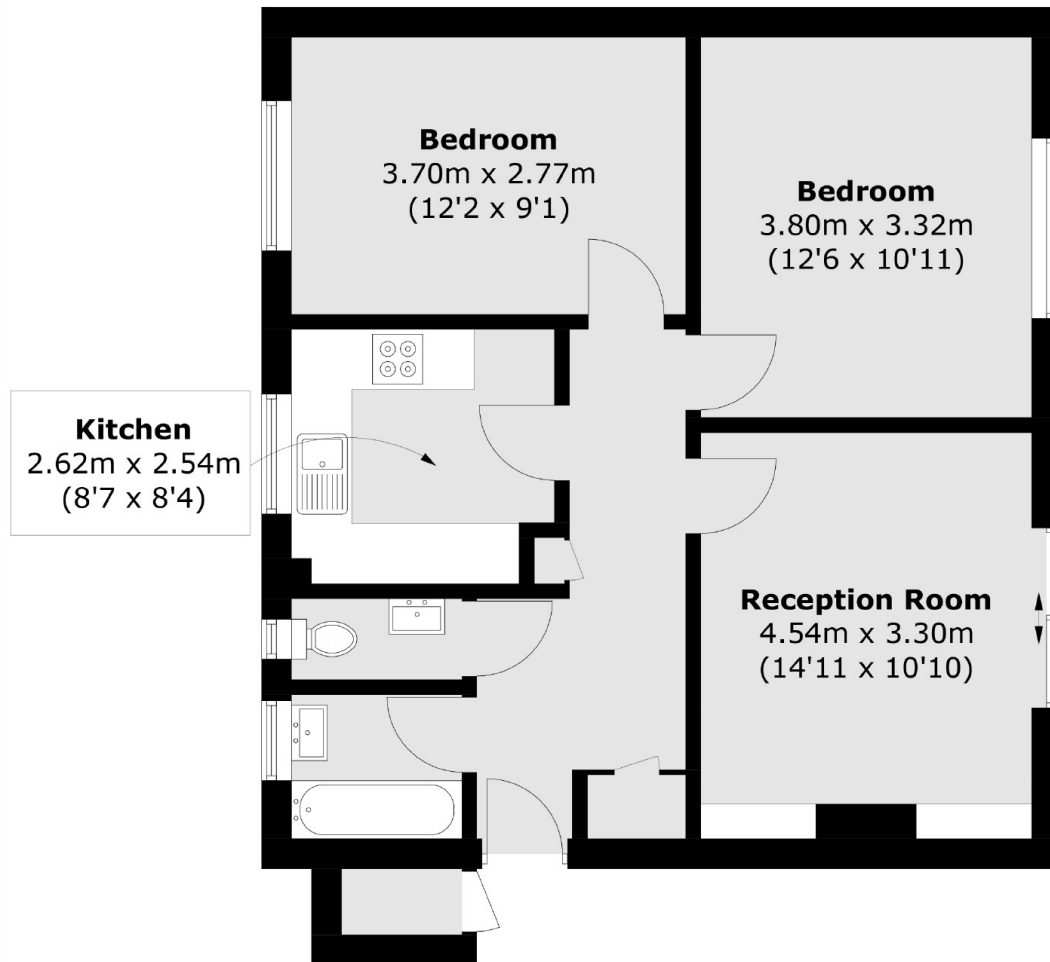
A lovely two double bedroom ground floor apartment ideally located and with the benefit of a large, private, south facing garden. There is a spacious reception room with large patio doors overlooking and providing access to the garden, two double bedrooms with beautiful herringbone wood flooring and a stylish modern kitchen. In addition, there are two external private storage areas.

This property is perfectly located on one of Kingston's premier residential roads with the gates of Richmond Park just a few yards from the top of New Road. Norbiton Station is just over half a mile away with Kingston town centre and the River Thames under a mile away.

### Features

- Two Double Bedrooms
- Ground Floor
- Private Garden
- Recently Updated
- Premier Location
- No Onward Chain

# New Road, Kingston Upon Thames, KT2



Total area (approx.): 59.5 sq. m (640.4 sq. ft)  
External Cupboard: 0.8 sq. m (8.6 sq. ft)