



London Road, KT2

£385,000

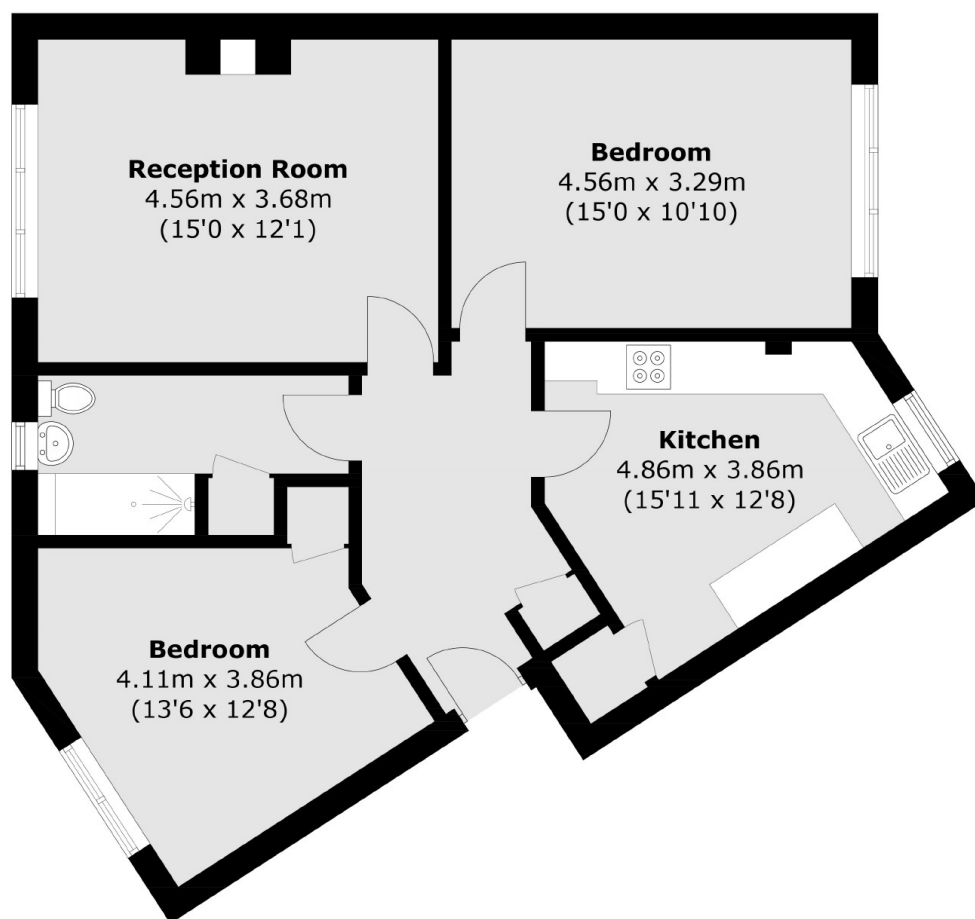
A spacious two double bedroom, first floor corner apartment with a large entrance hall, bright living room and larger than average kitchen/dining room. At just under 800 sq.ft, this apartment offers plenty of space and is definitely one to see.

Norbiton Hall is a popular landmark development in Kingston, ideally located on London Road just 500 yards to Norbiton Station with its excellent local shops. Kingston town centre is less than half a mile away with the River Thames and Richmond Park both under a mile away.

Features

- Two Double Bedrooms
- Large Corner Unit
- First Floor
- New Lease
- Popular Development
- Kitchen/Dining Room

London Road, Kingston Upon Thames, KT2



Total area (approx.): 73.9 sq. m (795.4 sq. ft)