



Byron Avenue, KT3

£650,000

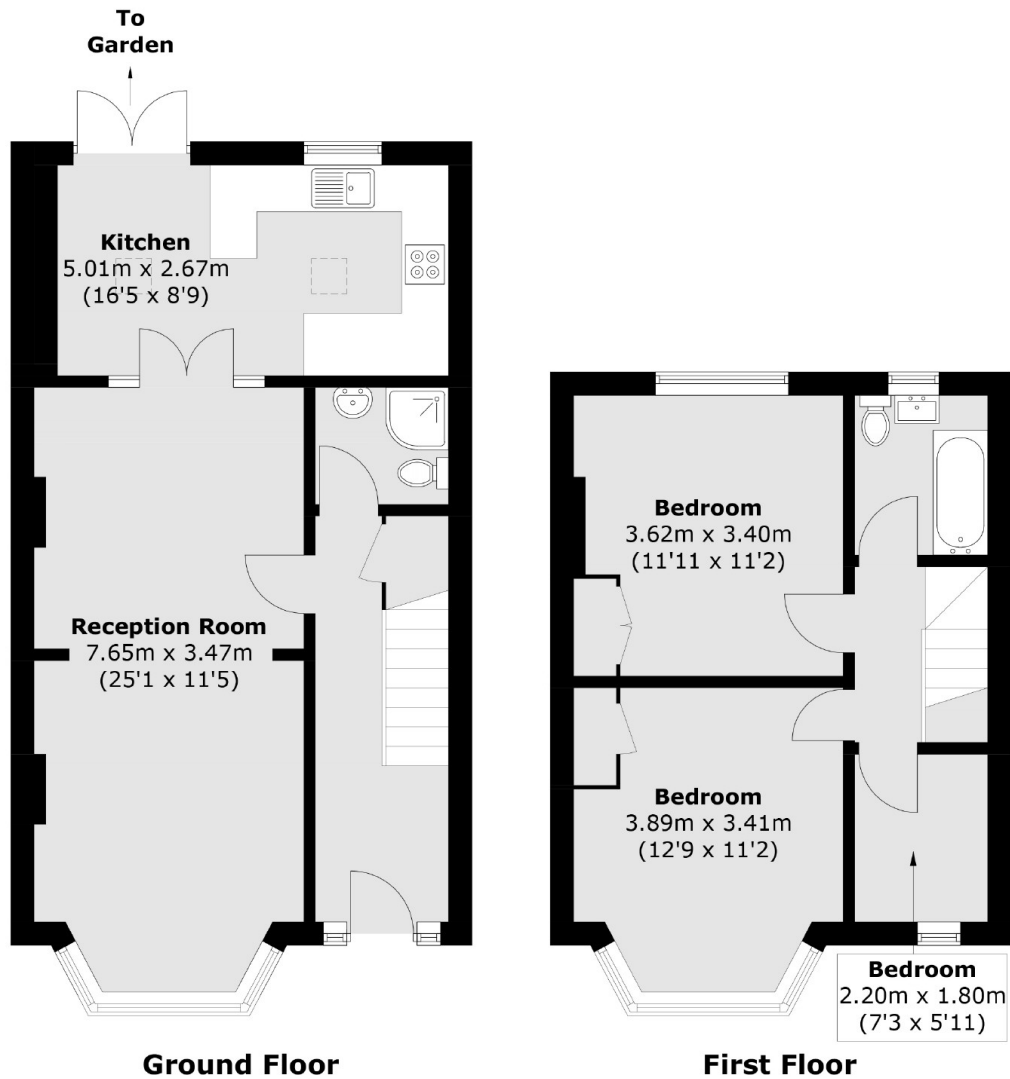
A three bedroom terraced family home, with off-street parking and a large private rear garden. The house was extended on the ground floor to the rear in 2021 and as a result there is a smart, spacious and modern kitchen/dining room.

Byron Avenue is a popular residential road less than 500 yards to Motspur Park Station and less than a mile to New Malden High Street and Station. The A3 is easily accessible for those needing road access into or out of London and there are several popular local schools.

Features

- Three Bedrooms
- Off-Street Parking
- Large Through Lounge
- Rear Extension
- Large Modern Kitchen
- Popular Location

Byron Avenue, New Malden, KT3



Total area (approx.): 90.6 sq. m (975.2 sq. ft)