



Vincent Road, KT1

£530,000

This is a very attractive, two double bedroom, semi-detached, Victorian cottage both inside and out. The current owners have created a lovely home with the perfect blend of modern living yet retaining the character and feel that makes these pretty cottages so popular.

This lovely cottage is located on Vincent Road alongside several other similar houses and approximately half a mile to Norbiton Station, Fairfield Park and Kingston town centre.

Features

- Pretty Victorian Cottage
- Two Double Bedrooms
- Beautifully Decorated
- Two Reception Rooms
- Stylish Kitchen
- Home Office In Garden



Vincent Road, KT1

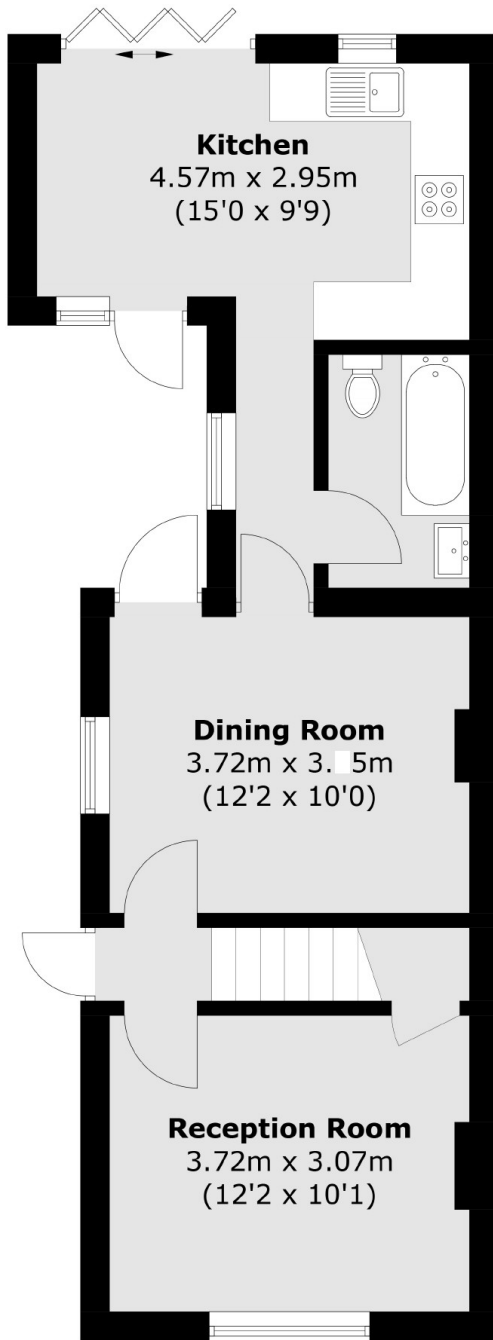
On the ground floor are the two reception rooms, to the front is the beautifully decorated, cosy living room with sash windows, engineered wood floor and a period fireplace. The dining room is located in the middle with an attractive period tiled floor and a door to the pretty internal courtyard garden as well as access to the stylish, modern kitchen/dining room. In addition, there is a modern bathroom to complete the ground floor.

Upstairs are the two double bedrooms, both beautifully decorated with period sash windows to the front and double glazed to the rear. Another unique addition to the house is the first floor Jack and Jill en suite WC to both bedrooms.

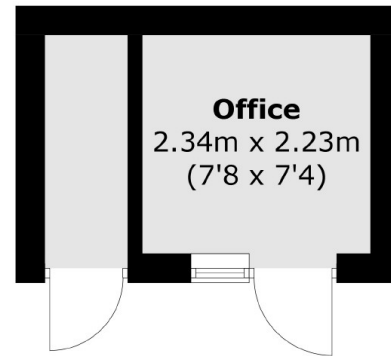
Outside, to the front is a neat garden secluded by a mature hedge. There is a side access to the courtyard garden and to the rear is the beautiful, secluded, south facing garden with lawn patio and mature shrub borders. Finally, there is a very smart home office at the back of the garden with exposed brick wall as the backdrop.



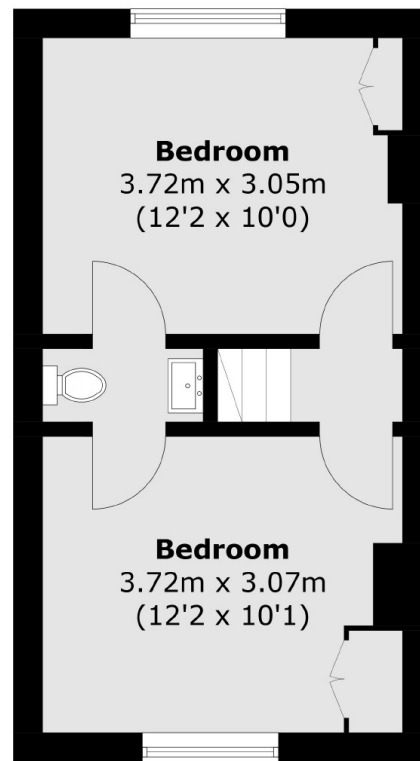
Vincent Road, Kingston Upon Thames, KT1



Ground Floor



**(Not Shown In Actual
Location / Orientation)**



First Floor

Total area (approx.): 72.1 sq. m (776.1 sq. ft)
Outbuilding area (approx.): 7.8 sq. m (83.9 sq. ft)