



Rosebery Road, KT1

£650,000

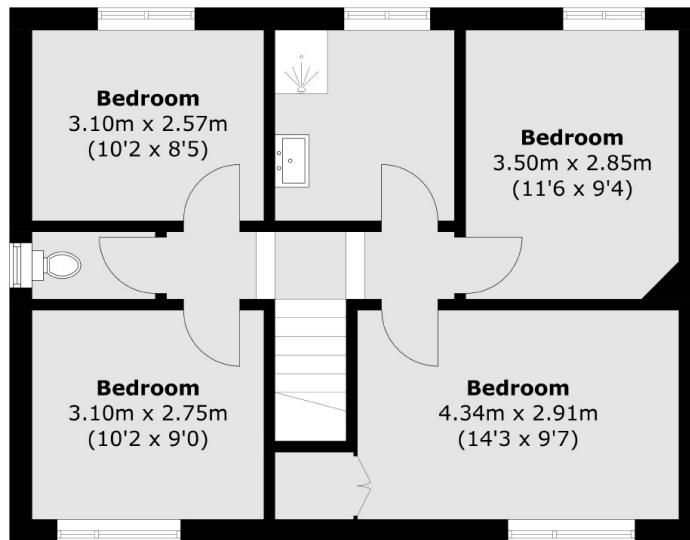
A spacious four bedroom family home sat on a good size corner plot offering significant potential for a new family to update and improve. There are three reception rooms on the ground floor, two currently being used as additional bedrooms, two large bathrooms and a separate WC. In addition, there is off-street parking, a large rear garden and no onward chain.

Rosebery Road is ideally positioned less than half a mile to Norbiton Station and central Kingston less than a mile away.

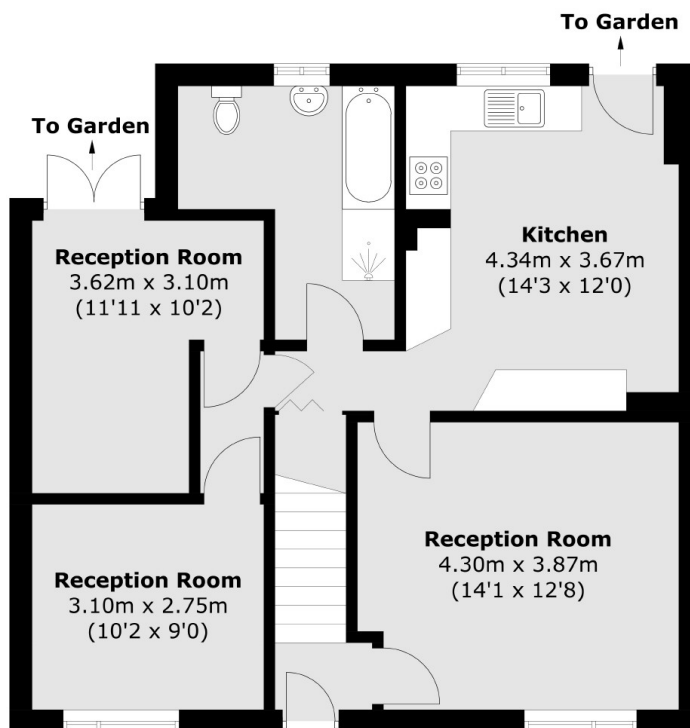
Features

Semi-Detached House
Four Bedrooms
Three Reception Rooms
Two Bathrooms
Corner Plot
Significant Potential

Rosebery Road, Kingston Upon Thames, KT1



First Floor



Ground Floor

Total area (approx.): 125.8 sq. m (1354.1 sq. ft)