



Royal Quarter, KT2

£340,000

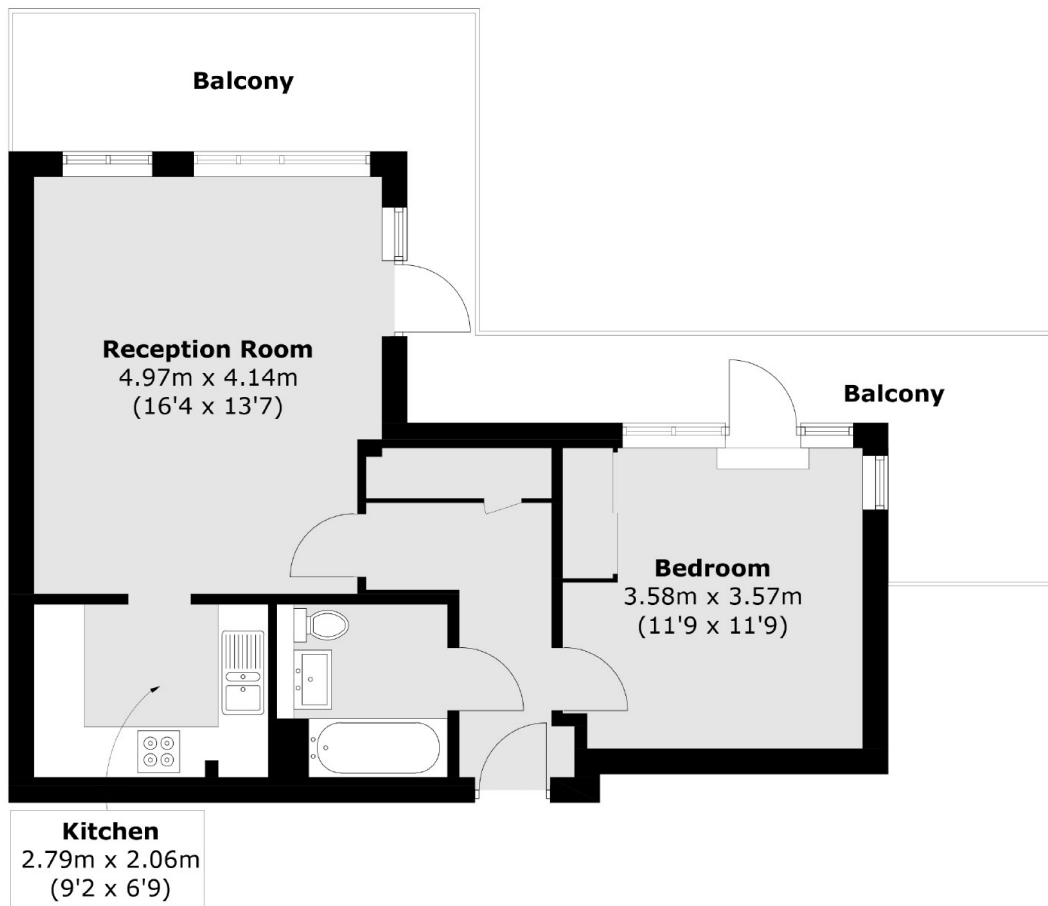
Graciously proportioned, this superb one double bedroom penthouse apartment enjoys it's own private wrap around balcony, integrated kitchen, spacious reception room and secure underground parking. The perfect first time buy or investment purchase.

The flat is in the popular Royal Quarter development, with concierge and residents gym. Centrally located in Kingston town centre, moments from the Bentalls Centre, Kingston Train Station and an array of bars and delicious restaurants along the riverside.

Features

- Penthouse Apartment
- Underground Parking
- Concierge
- Residents Gym
- Communal Gardens
- Private Wrap Around Balcony

Royal Quarter, Kingston Upon Thames, KT2



Total area (approx.): 51.3 sq. m (552.2 sq. ft)
Balcony area : 22.6 sq. m (243.3 sq. ft)