



## Gloucester Road, KT1

£850,000

A well presented three bedroom period home in a great location. The property offers a clean and light modern space with lots of amenities close by.

Gloucester Road is a popular residential road ideally located for Norbiton Station, the River Thames and Richmond Park's Kingston Gate, which offers over 2,500 acres of Royal parkland to enjoy. Access to both Richmond and Kingston centres are incredibly convenient and the property falls within the catchment for a choice of private and Ofsted rated Good and Outstanding state schools.

### Features

- Period Home
- Bay Fronted
- Large Garden
- Garage And External Office
- Great Location
- Good Condition





## Gloucester Road, KT1

On the ground floor there is a separate reception well finished with a brick fireplace and a beautiful square bay, the reception has a lot of natural light and nice high ceilings. As you head towards the rear of the property you are greeted with a fully extended, modern light and bright kitchen dining room with bi-folding doors out onto the garden. The space is modern and flooded with natural light, there is also a downstairs WC.

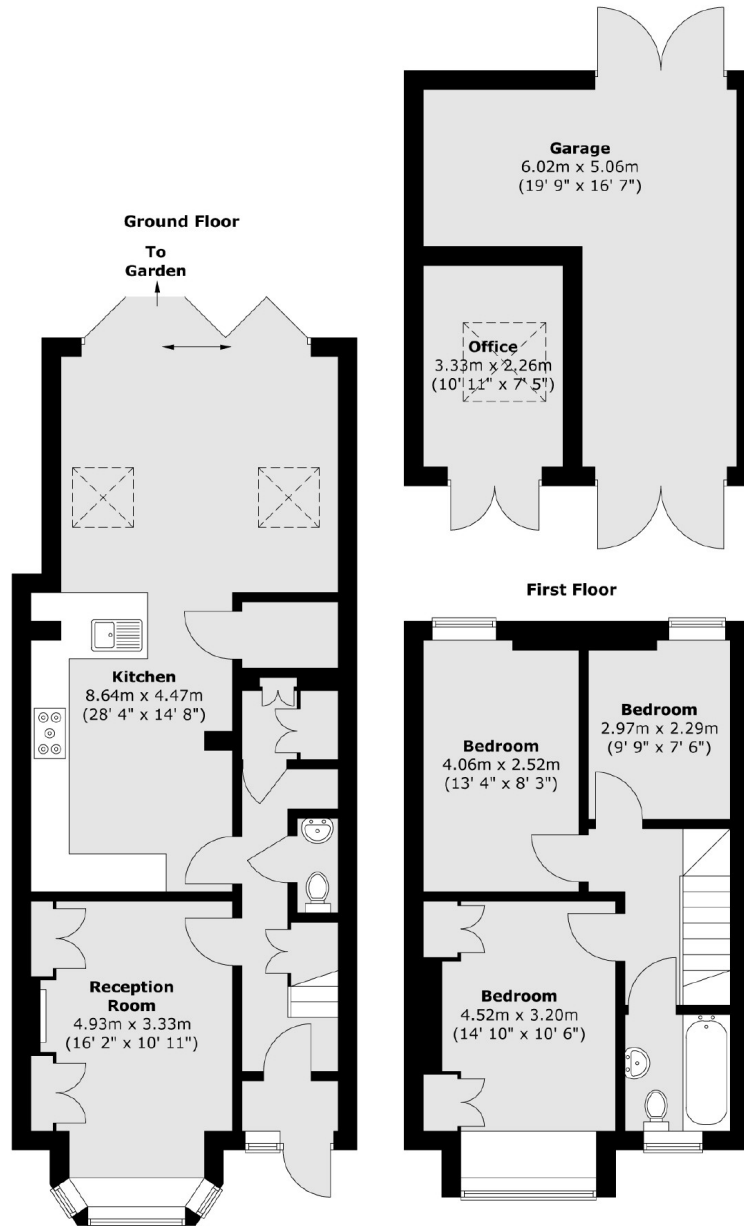
On the first floor there is a generous principal bedroom towards the front with plenty of built in storage, as well as two further well sized bedrooms towards the back. There is also a good sized family bathroom as well a large loft with potential to extend.

Towards the rear of the property there is a generous garden with an office/study space at the back.





# Gloucester Road, Kingston Upon Thames, KT1



Total area (approx.) : 104.3 sq. m (1123 sq. ft)  
Total garage area (approx.) : 22 sq. m (237 sq. ft)  
Total office area (approx.) : 7.6 sq. m (82 sq. ft)