



Avenue Road, KT1

£599,950

A pretty, character filled two double bedroom cottage ideally situated in a quiet road yet moments from Kingston town centre. The house is beautifully presented with a nice modern feel yet retaining many of the original features that make these houses so popular to our buyers.

Avenue Road is a quiet road just off Fairfield South and a short 500 yard stroll into Kingston town centre. The house is also approximately half a mile to Kingston Station and the River Thames.

Features

- Pretty Victorian Cottage
- Two Double bedrooms
- Two Reception Rooms
- Large First Floor Bathroom
- Private Rear Garden
- Excellent Location



Avenue Road, KT1

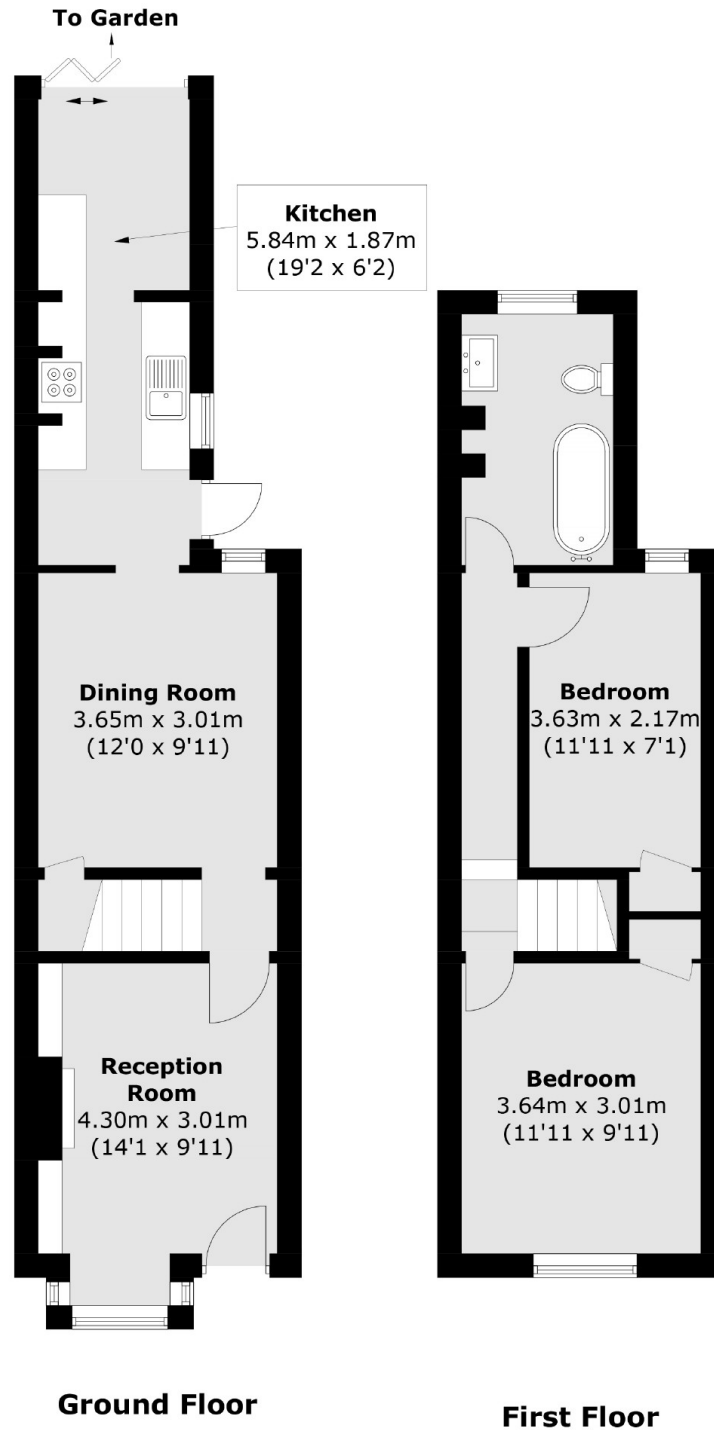
This pretty house is approached via a private front garden. The front door opens into the bay fronted reception room with a fireplace and attractive wood flooring that extends into the dining room that overlooks the rear garden. The large galley kitchen, which is accessed from the dining room, is fitted with sleek, modern white units that are complimented by the wood work surfaces. There are modern bi-folding doors that open onto the rear garden and good quality, double glazed, sash style windows fitted elsewhere.

On the first floor, are two double bedrooms and the family bathroom as well as access to the loft space.

Outside to the rear is a generous garden with a large patio and lawn area and room to extend further to the rear and side subject to the usual permissions.



Avenue Road, Kingston Upon Thames, KT1



Total area (approx.): 70.1 sq. m (754.5 sq. ft)