



Brewster Place, KT1

£225,000

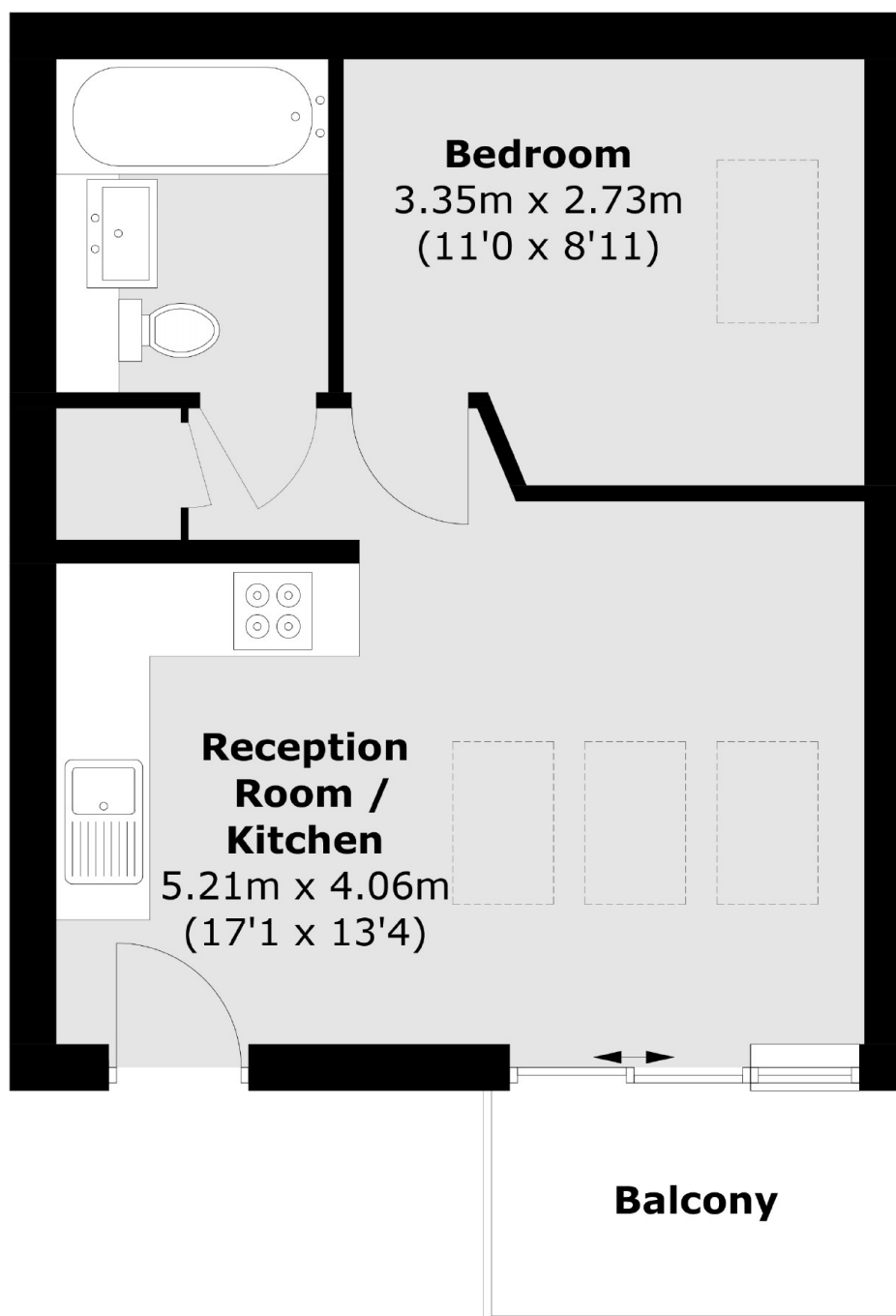
A perfectly proportioned one bedroom apartment with a private balcony that will make you feel like you are on holiday. The open plan reception room/kitchen feels light and airy due to a vaulted ceiling with skylights, plus there is a luxurious bathroom.

Brewster Place is conveniently located close to the shops and eateries in The Triangle, while both Norbiton Train Station and Kingston town centre are an easy walk away.

Features

- Double Bedroom
- Private Entrance
- Mediterranean Style Balcony
- Modern Finish
- Vaulted Ceilings
- Eco Credentials

Brewster Place, Kingston Upon Thames, KT1



Total area (approx.): 33.4 sq. m (359.5 sq. ft)
Balcony: 3.8 sq. m (40.9 sq. ft)