



Southwood Avenue, KT2

£6,500 Per calendar month

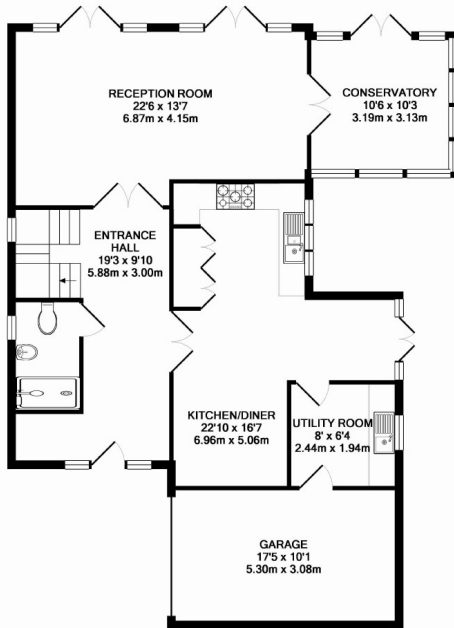
A substantial and beautifully presented family home located in the Coombe Estate. The house is spread over three floors and has a large kitchen family room, separate reception room, garage and off street parking.

Southwood Avenue is a desirable, quiet cul-de-sac in Coombe positioned between Wimbledon and Kingston and offers easy access to the A3. Not only are there excellent schools nearby but you have a choice of two golf clubs just around the corner.

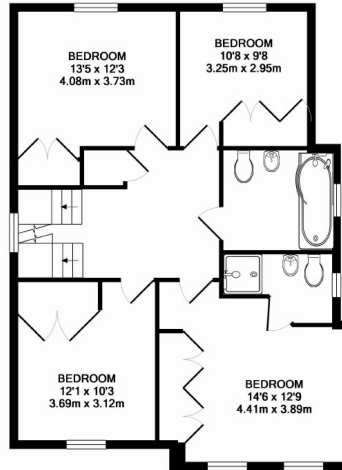
Features

- Detached House
- Gated
- Modern Eat-In Kitchen
- Further Utility Room
- Wooden Flooring
- Underfloor Heating

Southwood Avenue, Kingston Upon Thames, KT2

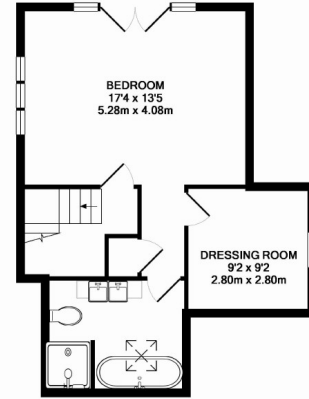


GROUND FLOOR
APPROX. FLOOR
AREA 107.4 SQ.M.
(1157 SQ.FT.)



1ST FLOOR
APPROX. FLOOR
AREA 76.0 SQ.M.
(818 SQ.FT.)

2ND FLOOR
APPROX. FLOOR
AREA 47.1 SQ.M.
(508 SQ.FT.)



SOUTHWOOD AVENUE KINGSTON KT2 7HD
TOTAL APPROX. FLOOR AREA 230.6 SQ.M. (2482 SQ.FT.)

All measurements taken to RICS Guidelines for Gross Internal Area. Whilst every attempt has been made to ensure the accuracy of the floor plan contained here, all measurements are approximate and no responsibility is taken for any error, omission or misstatement. The plan is for illustrative purposes only and should be used as such by any prospective purchaser. The services, systems and appliances shown have not been tested and no guarantee as to their operability or efficiency can be given.
Made with Metropro ©2012