



## Kingston Hill, KT2

£350,000

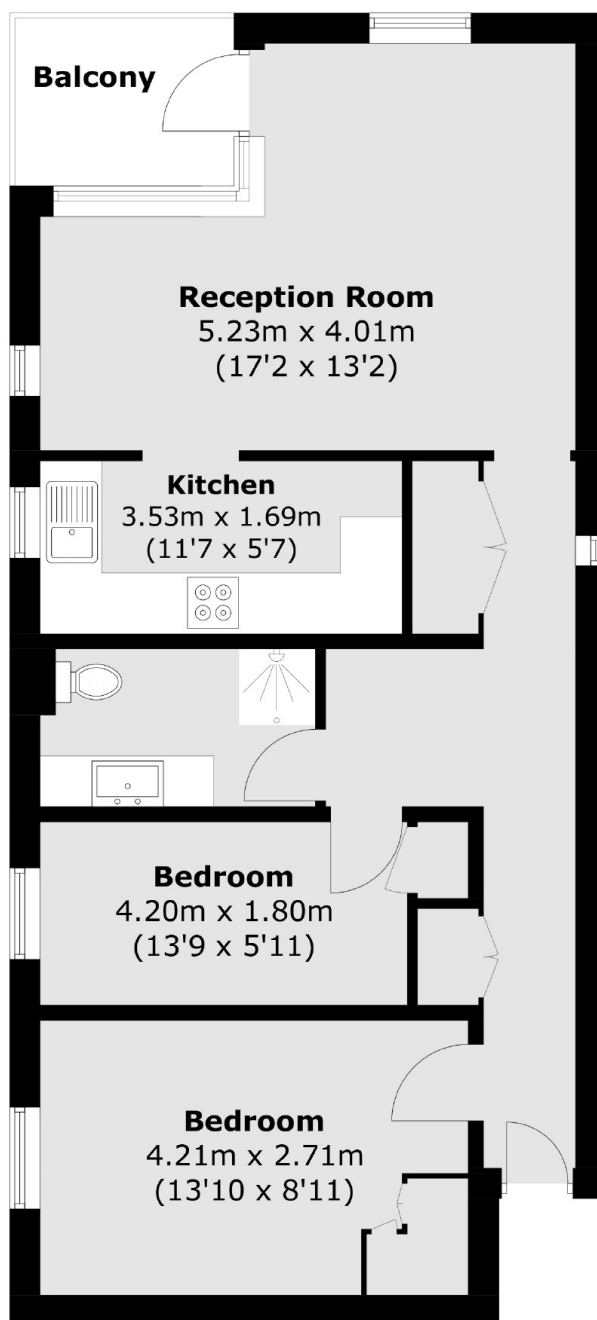
Located on the fifth floor within a popular residential development on Kingston Hill is this well presented, two bedroom apartment that enjoys panoramic views from the large covered balcony over Richmond Park and beyond.

High Ashton, Kingston Hill is centrally situated within Kingston Upon Thames and is ideally positioned for the River Thames, Norbiton mainline Train Station and the areas extensive shopping and leisure amenities including both High Street and artisan shops, independent coffee shops and fabulous bars and restaurants.

### Features

- Two Bedrooms
- Reception Room
- Fitted Kitchen
- Modern Bathroom
- Communal Grounds
- Garage And Residents Parking

# Kingston Hill, Kingston Upon Thames, KT2



Total area (approx.): 59.7 sq. m ( 642.6 sq. ft)  
Balcony area : 3.5 sq. m ( 37.6 sq. ft)