



## Cambridge Gardens, KT1

£285,000

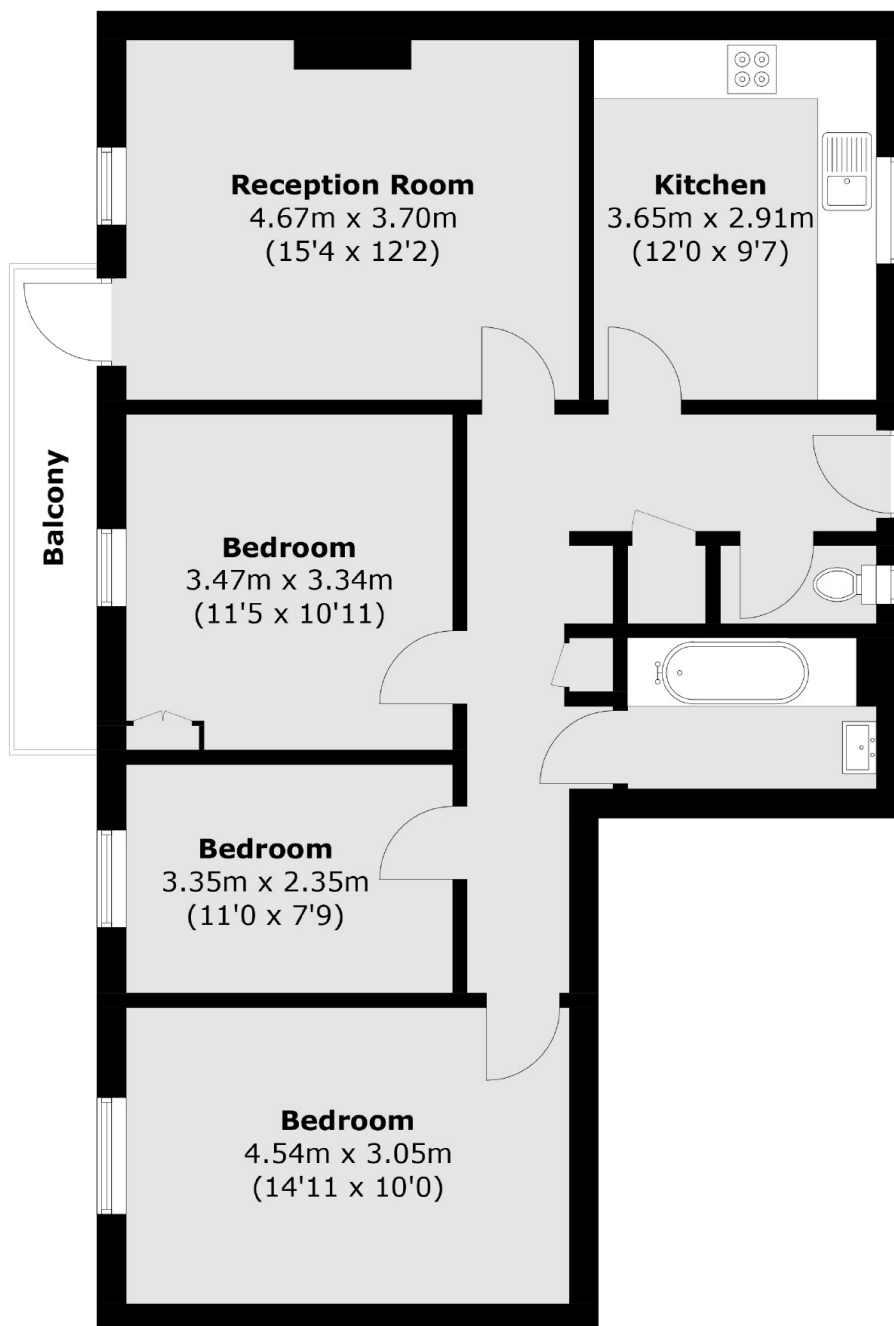
A spacious three bedroom apartment conveniently located for Kingston town centre and Norbiton Station. The property is in need of updating but offers the size and space rarely available especially at this price point.

Cambridge Gardens is conveniently positioned less than 500 yards to Norbiton Station, half a mile to Kingston town centre and a mile to the River Thames.

### Features

- Three Bedrooms
- Large Lounge
- Spacious Kitchen
- Over 900 sq.ft
- In Need Of Modernisation
- No Onward Chain

# Cambridge Gardens, Kingston Upon Thames, KT1



Total area (approx.): 83.7 sq. m (900.9 sq. ft)  
Balcony: 4.2 sq. m (45.2 sq. ft)