



Queenshurst Square, KT2

£650,000

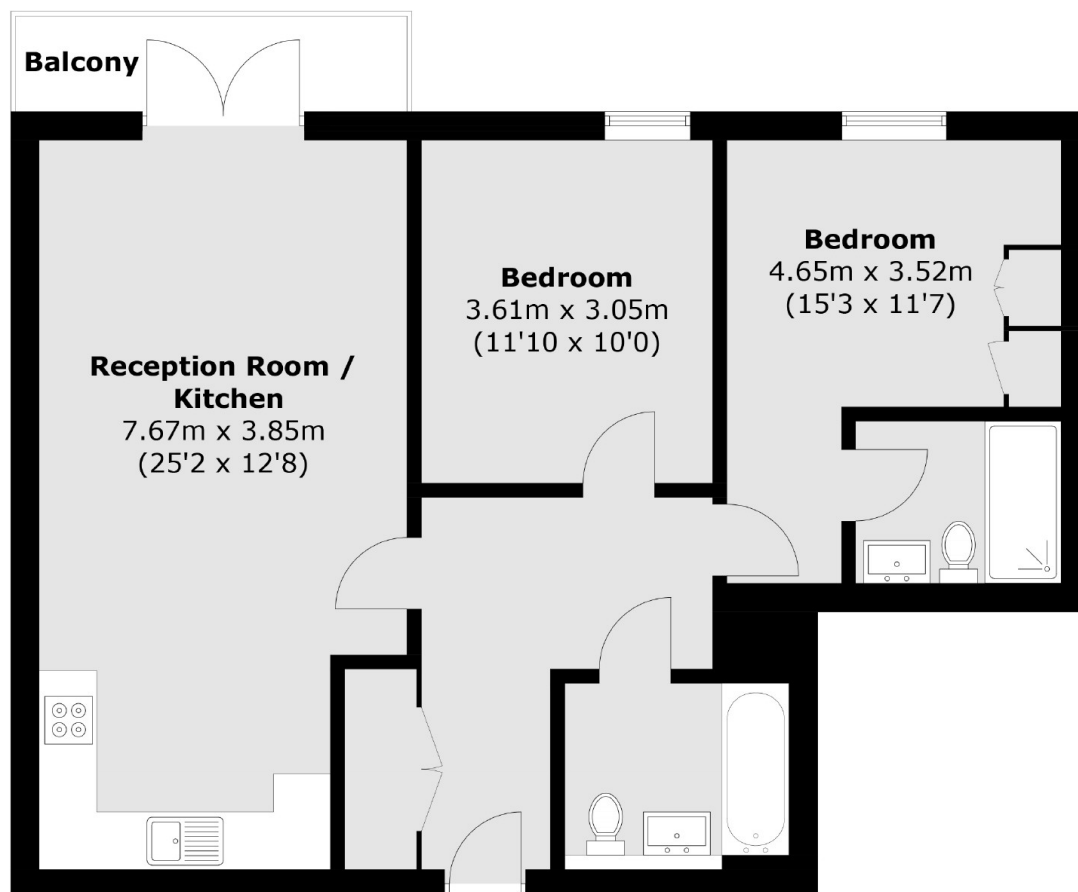
Hamond Court is known for its exceptional quality and this lovely, two double bedroom apartment on the first floor has great views of the courtyard garden from a private balcony. The property offers spacious, modern living in a fantastic location,

Hamond Court is perfectly located for Kingston town centre and Railway Station, with a range of local shops and with the River Thames just moments away, you will never be short of things to do.

Features

- Two Double Bedrooms
- Concierge Service
- Residents Gym And Cinema
- Private Balcony
- Secure Underground Parking
- Great Location

Queenshurst Square, Kingston Upon Thames, KT2



First Floor

Total area (approx.): 73.7 sq. m (793.3 sq. ft)
Balcony : 4.1 sq. m (44.1 sq. ft)