



Yeovilton Place, KT2

£600,000

A two double bedroom house ideally located in a highly desirable, residential part of Kingston, close to Ham. Benefitting from a spacious reception room, modern kitchen area with a dining space, great sized garden and parking space.

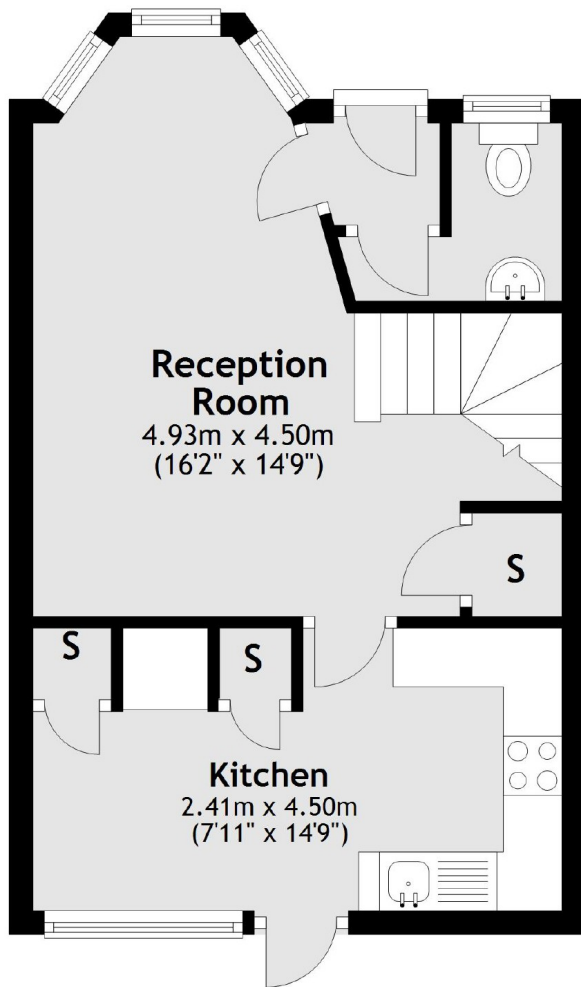
Located in a highly desirable and residential part of Kingston, Yeovilton Place is a peaceful road, just a short stroll to a scenic part of the River Thames close to Teddington Locks and Ham Lands Nature Reserve. This is also less than a mile riverside walk into Kingston town centre.

Features

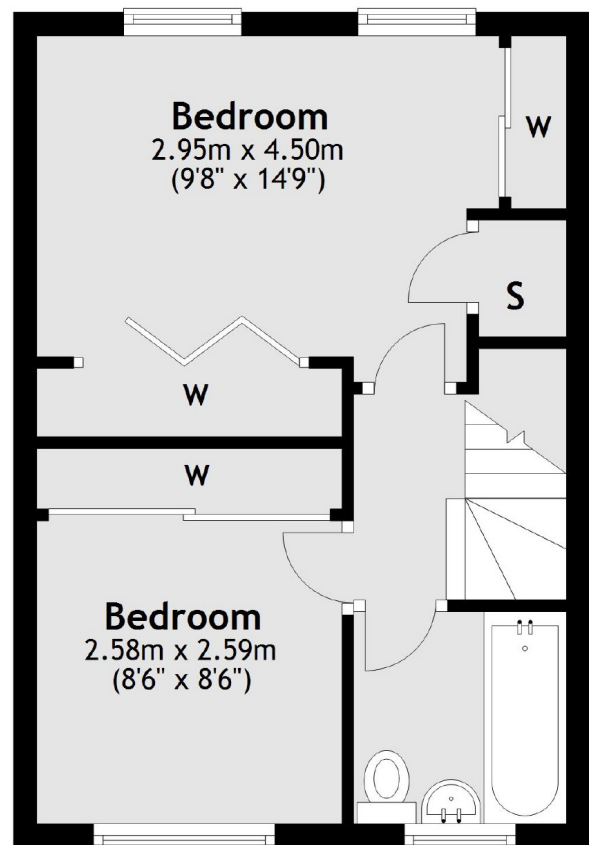
- Downstairs Cloakroom
- Allocated Parking
- Residential Road
- Two Double Bedrooms
- Attractive Garden
- Modern Kitchen

Yeovilton Place, Kingston Upon Thames, KT2

Ground Floor



First Floor



Total area: approx. 61.4 sq. metres (661.4 sq. feet)