



Gloucester Road, KT1

£395,000

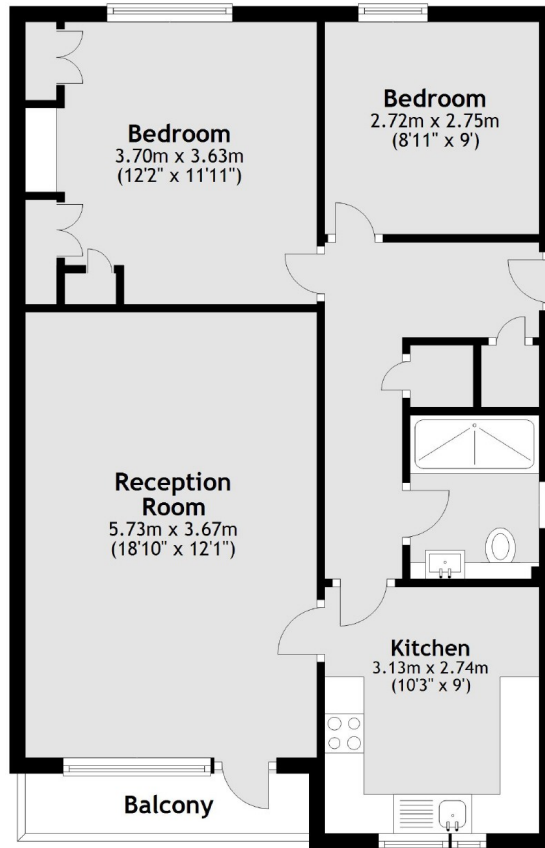
A delightful two double bedroom first floor apartment in a popular development with attractive communal gardens and a private garage. The apartment also benefits from a private balcony and has a lovely, spacious lounge/dining room.

Brackendale is an attractive, popular development just 500 yards to Norbiton Station and under a mile to Kingston town centre.

Features

- Two Double Bedrooms
- Private Balcony
- Communal Gardens
- Private Garage
- First Floor
- Lift Access

Gloucester Road, Kingston Upon Thames, KT1



Main area: Approx. 64.5 sq. metres (694.7 sq. feet)
Plus balconies, approx. 3.2 sq. metres (34.8 sq. feet)