



Coombe Lane West, KT2

£7,500 Per calendar month

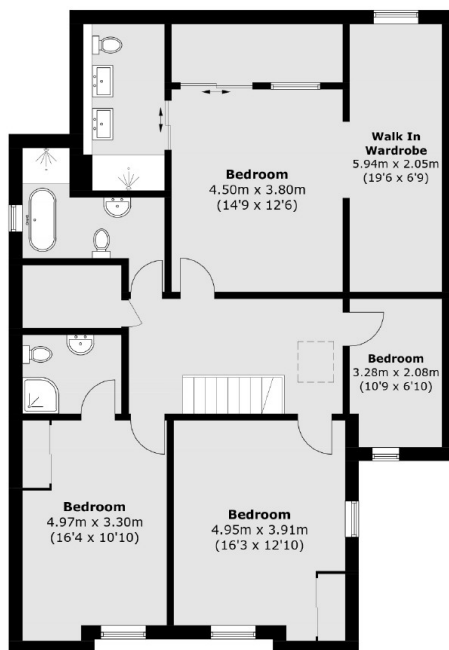
A contemporary, detached family residence, with four bedrooms and four bathrooms. Complete with garden room and a stunning landscaped garden, offering exceptional living. Built with uncompromising quality and originality, the high specification materials blend seamlessly with state-of-the-art design and architecture.

Coombe Lane West is a sought after location, close to Wimbledon, Richmond, Richmond Park and Kingston Upon Thames. The Thames, prestigious golf courses, the Roehampton Club, David Lloyd Leisure Centre are all nearby.

Features

- Four Bedrooms
- Studio With Underfloor Heating
- Gated Property With Ample Off Street Parking
- Large Garden With Studio
- Solar Panels
- New To The Rental Market

Coombe Lane West, Kingston Upon Thames, KT2



First Floor



Ground Floor

Total area (approx.): 227.9 sq. m (2,453.0 sq. ft)
Store Room / Studio: 19.6 sq. m (211.0 sq. ft)