



Sigrist Square, KT2

£370,000

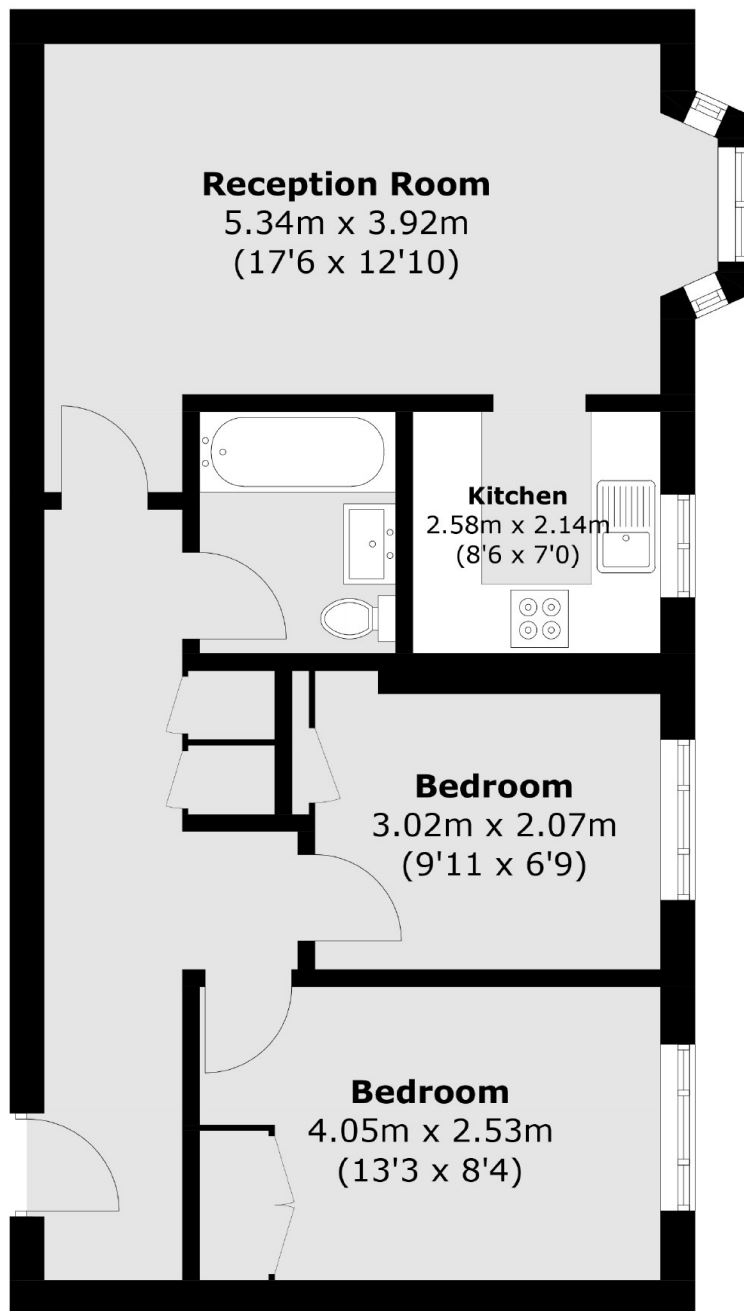
A well presented ground floor, two bedroom apartment located in a popular gated development with parking and communal gardens. The property offers spacious living in a central Kingston Location, walking distance from lots of local amenities.

Sigrist Square is a pretty, gated development just 250 yards to Central Kingston and main line Station. As locations go, they don't get much better than this.

Features

- Ground Floor
- Two Bedroom Apartment
- Allocated Parking
- Gated Development
- Communal Gardens
- Central Location

Sigrist Square, Kingston Upon Thames, KT2



Total area (approx.): 58.3 sq. m (627.5 sq. ft)