



## Bearfield Road, KT2

£565,000

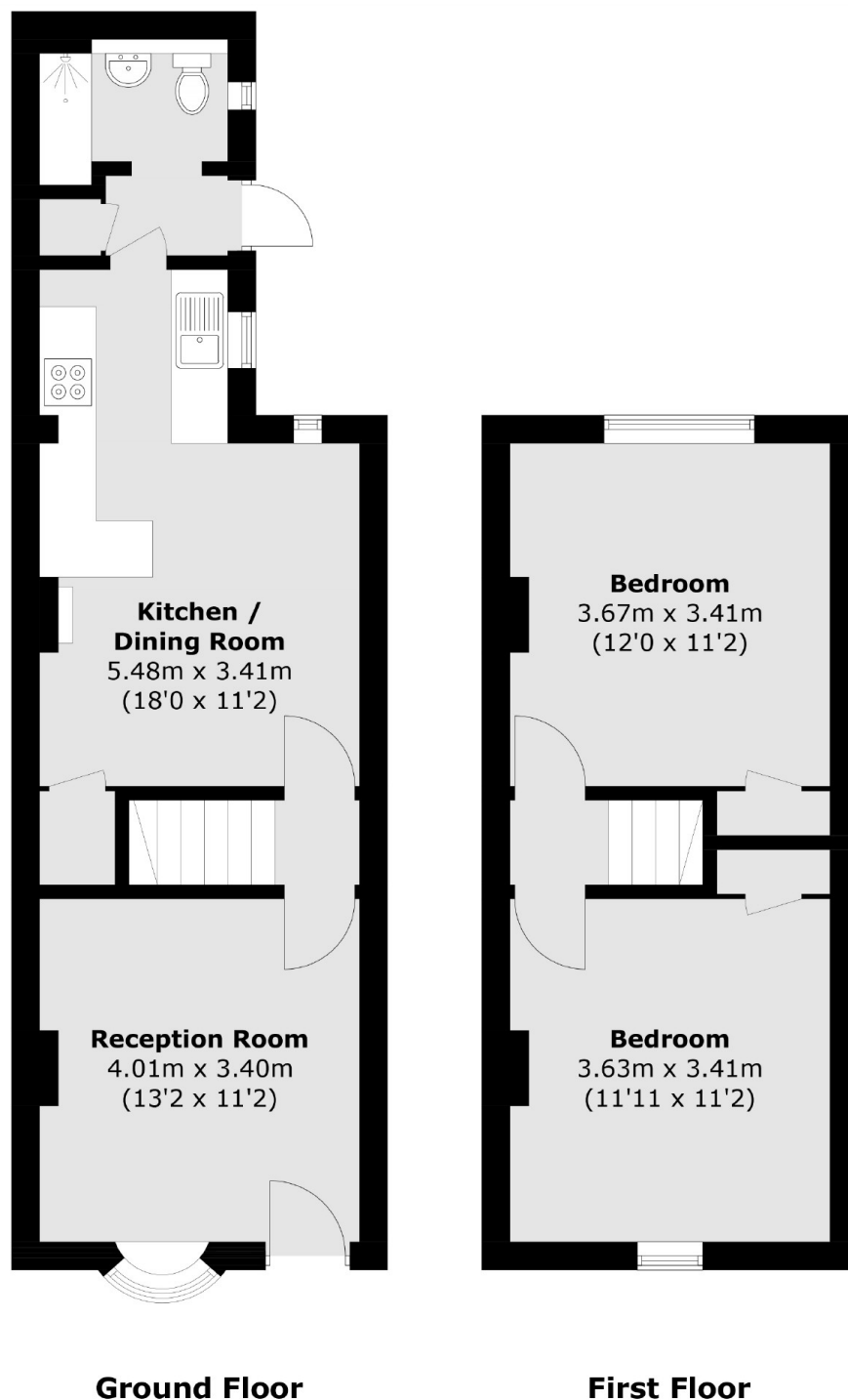
A great opportunity to purchase a pretty two bedroom Victorian cottage, offered with no onward chain and a great opportunity to update, improve and add value. Although the current layout is very popular, there is potential to extend to the rear, first floor and loft to create a sizable family home, subject to the required planning permissions.

Bearfield Road is a quiet residential road perfectly placed in North Kingston yet just a few hundred yards to Canbury Gardens and the River Thames.

### Features

- Two Double Bedrooms
- Two Reception Rooms
- Private Rear Garden
- No Onward Chain
- In Need Of Modernisation
- Great Potential

# Bearfield Road, Kingston Upon Thames, KT2



Total area (approx.): 66.6 sq. m (716.9 sq. ft)