



## Birkenhead Avenue, KT2

£335,000

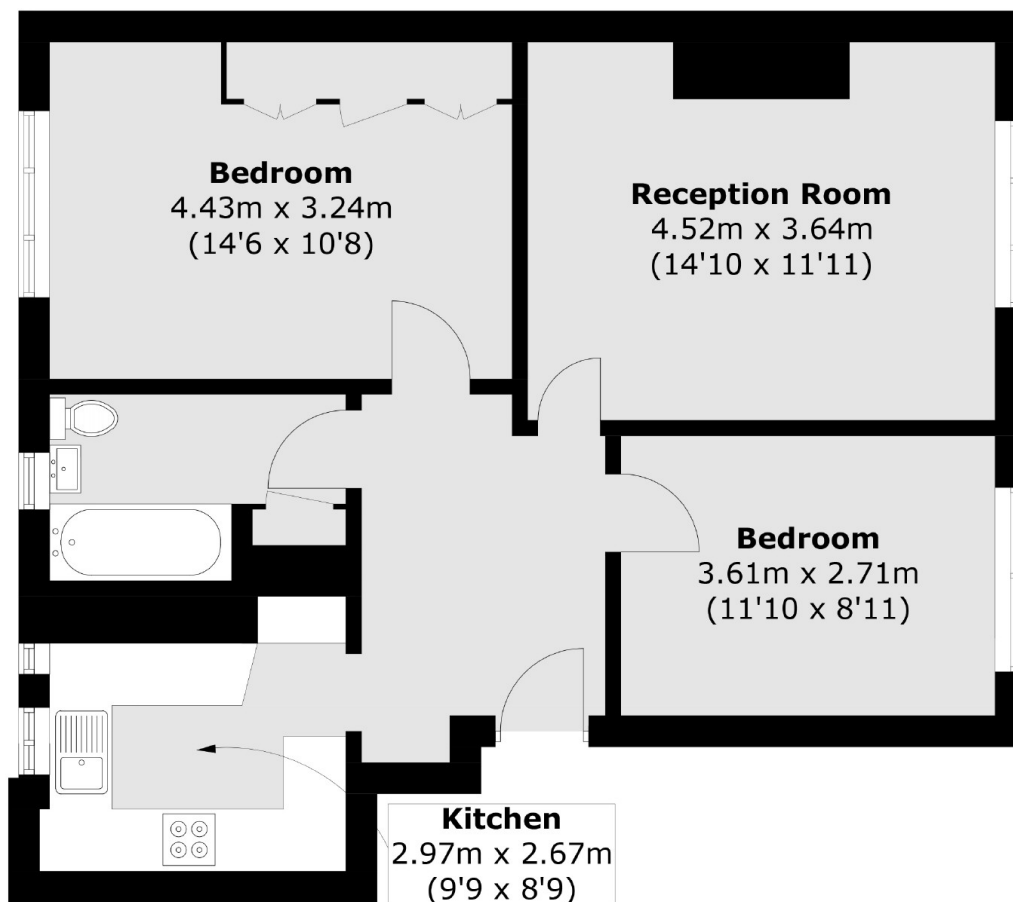
A two bedroom ground floor apartment in a popular Kingston development that benefits from a recently extended lease. Although in need of updating this is a great blank canvas for the new owner to make their own.

Norbiton Hall is a very popular development centrally located with everything Kingston has to offer just a short walk away.

### Features

- Two Bedrooms
- Ground Floor
- Central Location
- No Onward Chain
- In Need Of Updating
- Newly Extended Lease

# Birkenhead Avenue, Kingston Upon Thames, KT2



Total area (approx.): 64.1 sq. m (689.9 sq. ft)