



## Albion Road, KT2

£7,995 Per calendar month

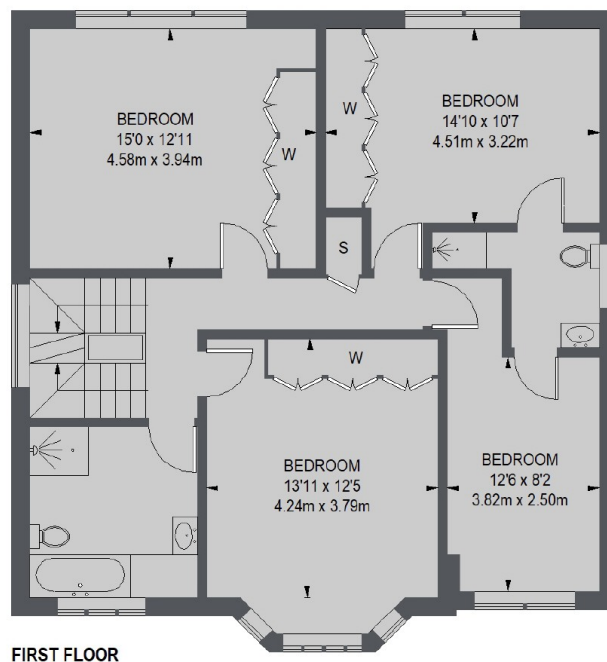
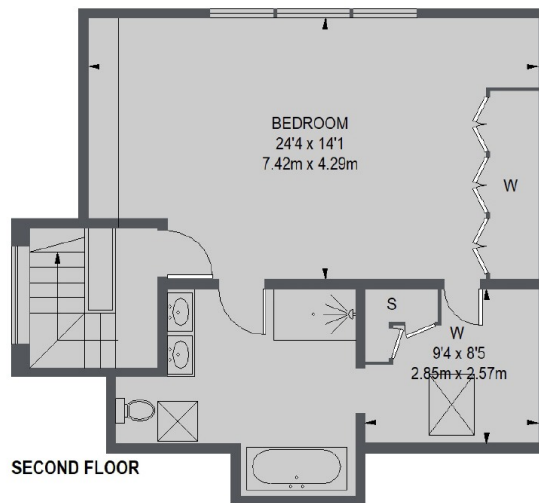
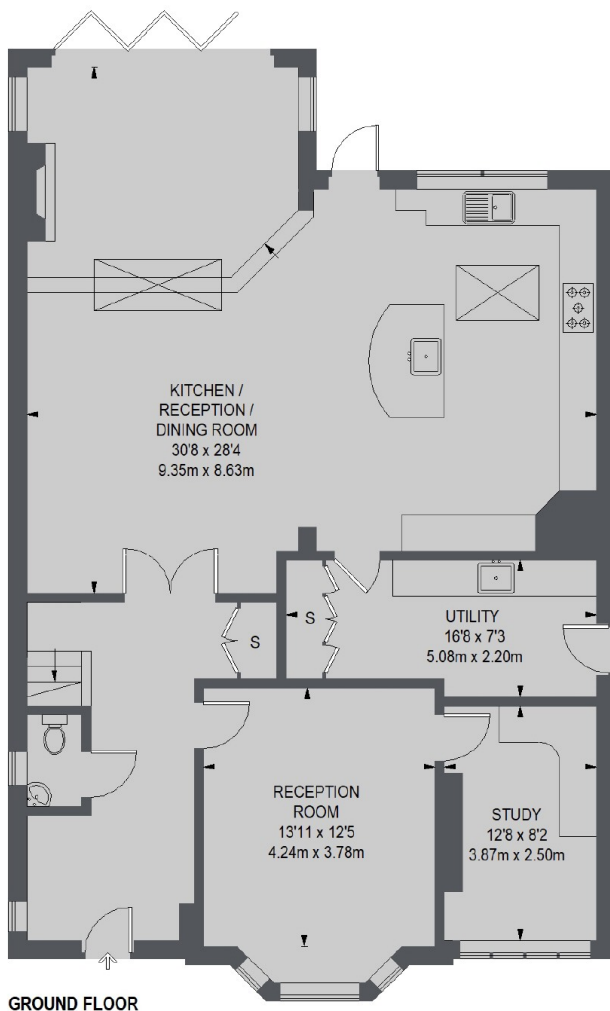
SHORT TERM RENTAL - This exceptional detached property offers space and style for the growing family. The property has plenty of entertaining space, five bedrooms and a large rear garden.

Located in a highly desirable private estate in Coombe with easy access to the A3, local amenities, public bus routes, Richmond Park and Kingston town centre offering extensive shopping facilities.

### Features

- Five Bedrooms
- Detached Home
- Landscaped Garden
- Modern Interior
- Private Road
- Close To Transport Links

# Albion Road, Kingston Upon Thames, KT2



TOTAL APPROX. FLOOR AREA 2914 SQ. FT. (270.71 SQ. M.)