



## Beechcroft Avenue, KT3

£749,950

A great family house in a popular residential location in New Malden. With five spacious bedrooms, two family bathrooms and a large living room, there is ample space for a growing family.

Beechcroft Avenue forms as part of a sought after residential area of New Malden in close proximity to excellent schools, local amenities and transport links.

### Features

- Five Bedrooms
- Two Bathrooms
- Large Reception Room
- Spacious Kitchen
- Off-Street Parking
- Great Location





## Beechcroft Avenue, KT3

The ground floor entrance hall provides access to the separate WC as well as the large open plan lounge/dining room which in turn leads into the spacious, fitted kitchen.

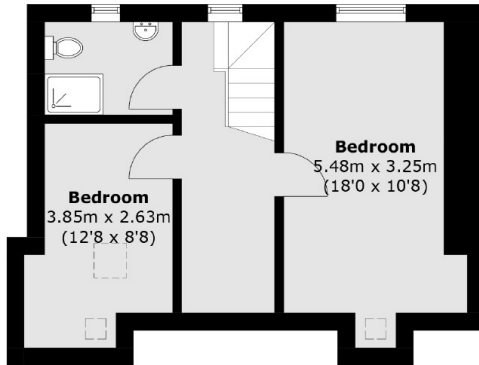
On the first floor are three bedrooms, two double and one single. There is also a family bathroom to service each of the bedrooms. On the second floor are the remaining two bedrooms and bathroom.

Outside to the front is the private driveway that provides off-street parking for several cars and to the rear is the wide and easily maintained garden which is mainly paved for convenience.

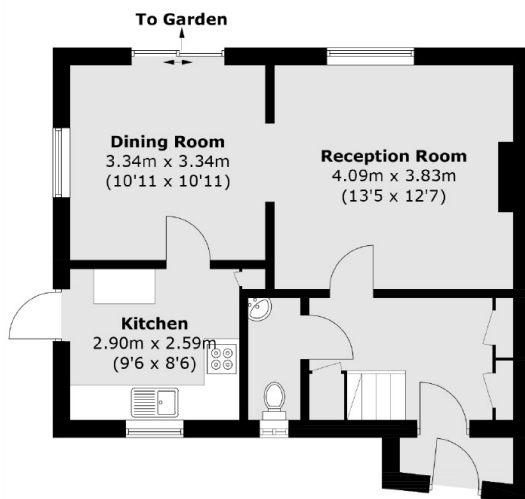




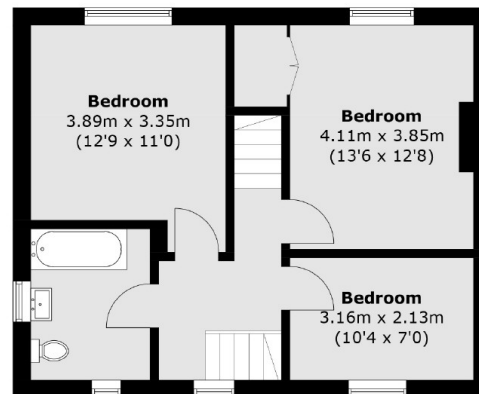
# Beechcroft Avenue, New Malden, KT3



**Second Floor**



**Ground Floor**



**First Floor**

Total area (approx.): 133.2 sq. m (1,433.7 sq. ft)