



Elm Road, KT2

£625,000

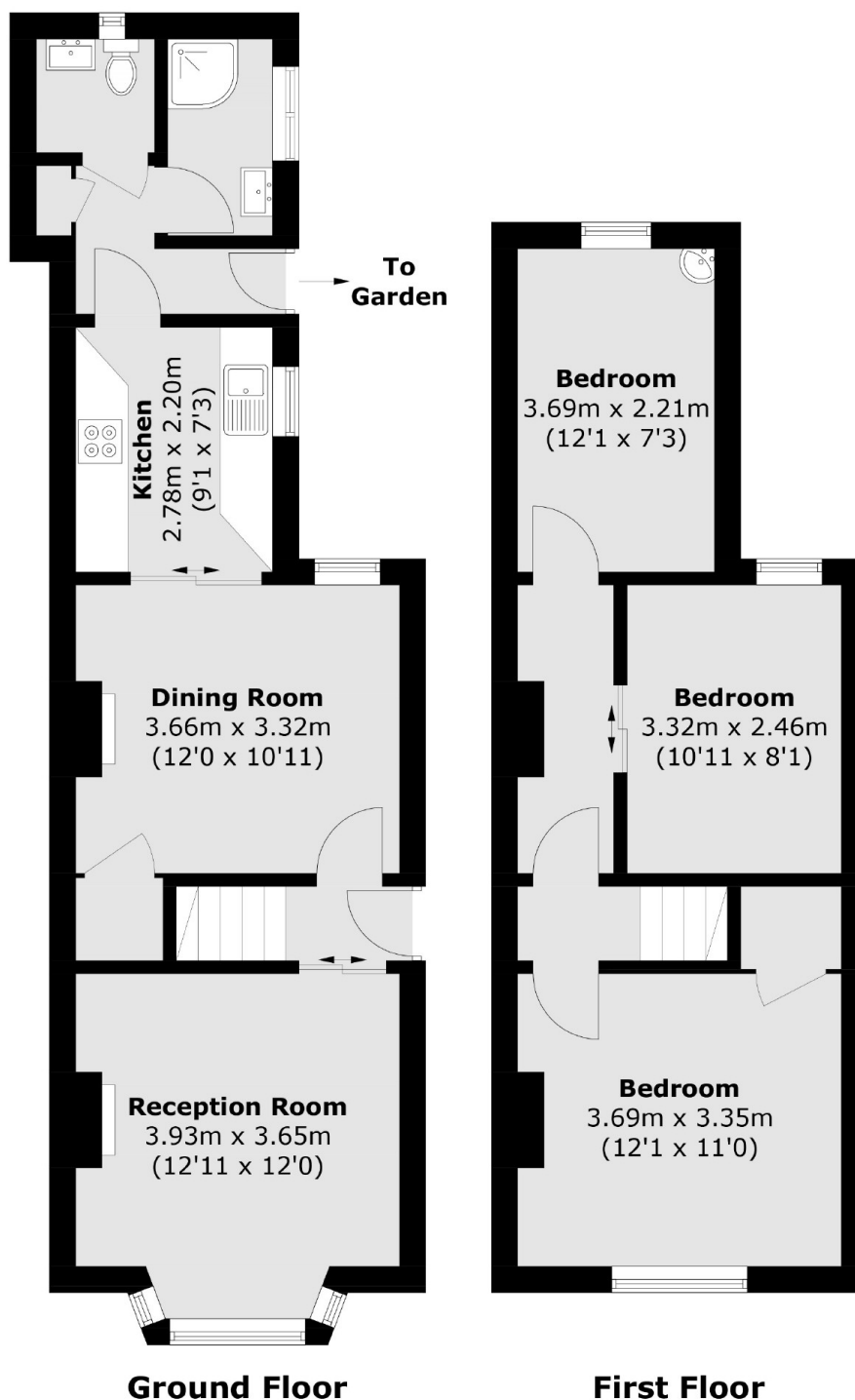
A great opportunity to buy a three bedroom, Victorian, semi-detached house in North Kingston with huge potential to improve and extend, subject to the usual permissions. The house is currently laid out with two reception rooms, kitchen and bathroom on the ground floor and the three bedrooms on the first floor. This house is perfect for someone looking for a house they can make their own.

Elm Road is a popular residential road in North Kingston, ideally positioned and less than half a mile to Norbiton Station, Kingston town centre, Kingston Station and Richmond Park.

Features

- Three Bedrooms
- Semi-Detached
- Two Reception Rooms
- Huge Potential
- In Need Of Modernisation
- No Onward Chain

Elm Road, Kingston Upon Thames, KT2



Total area (approx.): 82.8 sq. m (891.2 sq. ft)