



## Queenshurst Square, KT2

£650,000

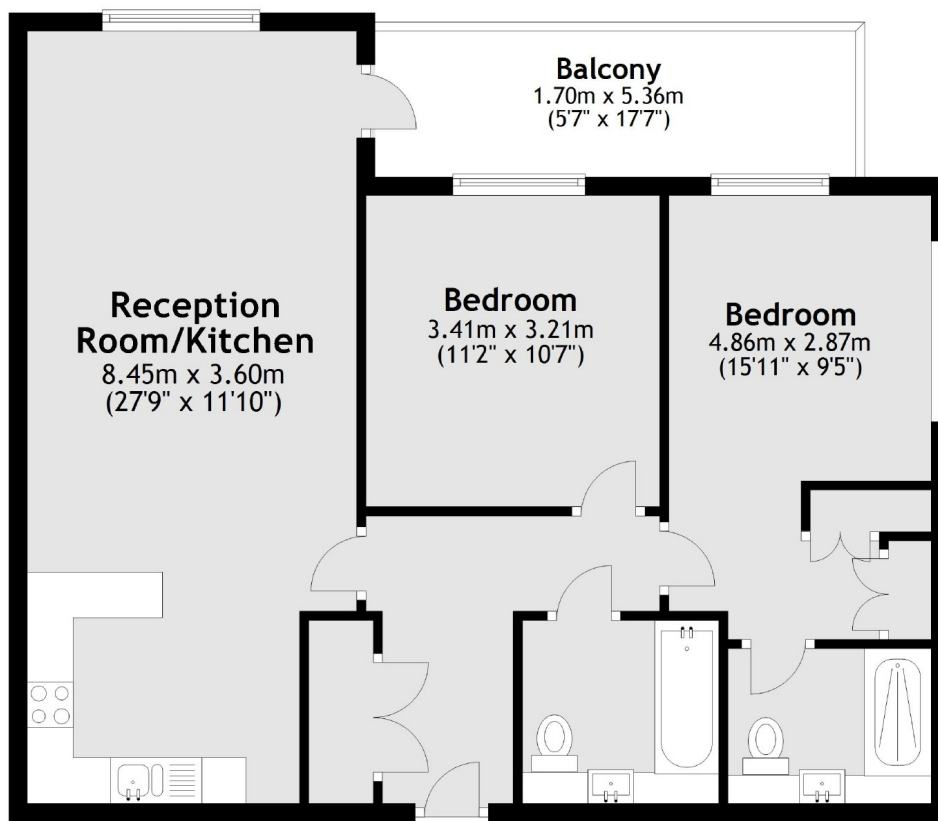
Hamond Court is known for their exceptional quality and this lovely, two double bedroom apartment sits on the top floor with fabulous far reaching views from the spacious, private balcony. With no onward chain, this stunning apartment has been designed with stylish and modern living in mind, perfect for a professional couple or small family.

Hamond Court is perfectly located for Kingston town centre and railway station, with a range of local shops and with the River Thames just moments away, you will never be short of things to do.

### Features

- Two Bedrooms
- Concierge Service
- Convenient Location
- Residents Cinema Room
- Residents Gym
- Fabulous Views

# Queenshurst Square, Kingston Upon Thames, KT2



Main area: Approx. 72.2 sq. metres (777.5 sq. feet)  
Plus balconies, approx. 9.1 sq. metres (97.7 sq. feet)