



Anglesea Road, KT1

£475,000

Located on the popular River Roads between Kingston and Surbiton is this spacious two bedroom, raised ground floor apartment forming part of this wonderful period building. The lounge has a fireplace, large windows and stunning original cornicing and window shutters.

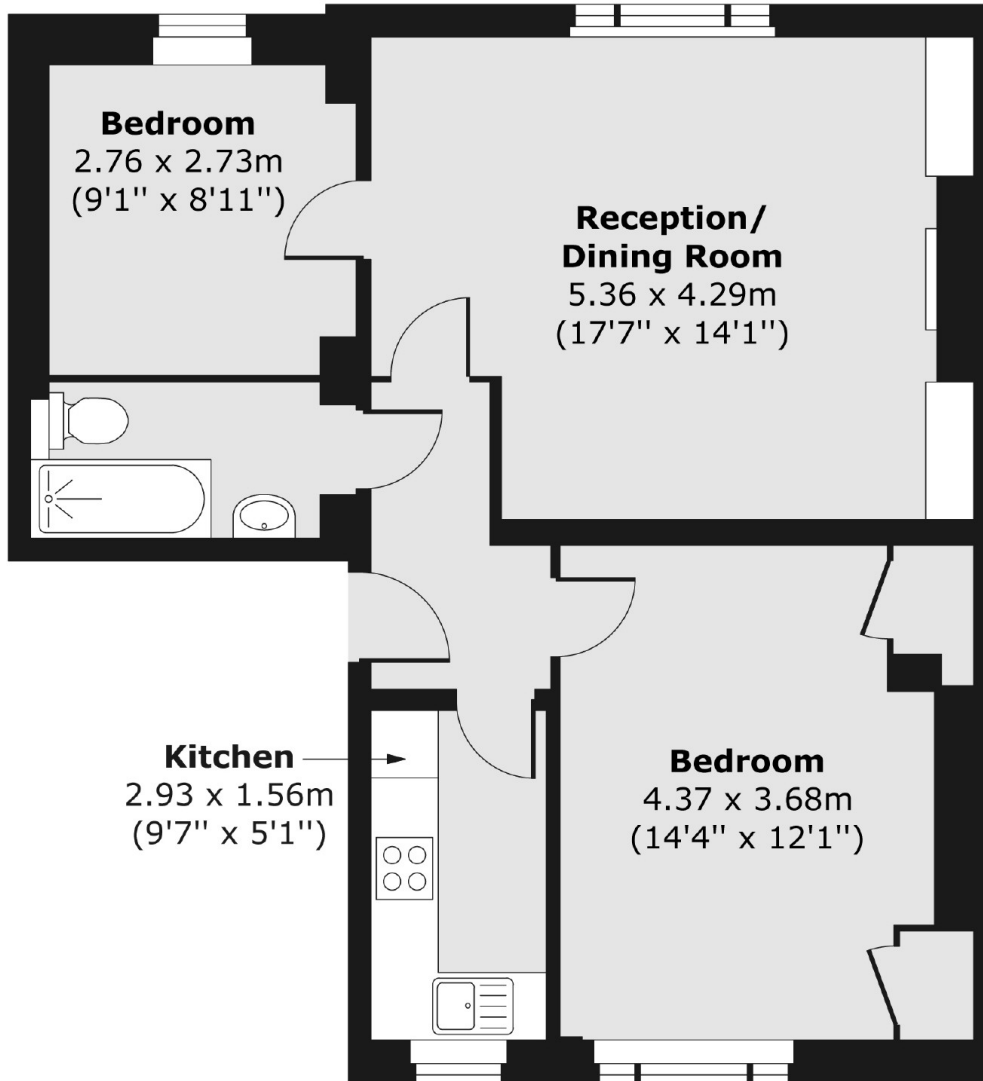
Anglesea Road is a lovely residential road off the Portsmouth Road and just 250 yards to the banks of the River Thames. It is also ideally placed being equidistant and just half a mile to Surbiton Station as well as Kingston town centre.

Features

- Raised Ground Floor
- Two Bedrooms
- Beautiful Period Building
- Shared Garden
- Allocated Parking
- No Onward Chain

Anglesea Road, Kingston Upon Thames, KT1

Ground Floor



Total area (approx.) 60.05 sq. m (646 sq. ft)