



Windermere Road, SW15

£925,000

Benefiting from being located at the end of a quiet cul-de-sac is this beautifully presented and fully extended semi-detached property offering approximately 2,400 sq ft of stylish accommodation over three floors. The property is offered with no forward chain.

Windermere Road is a popular residential road in the sought-after Kingston Vale area, close to both Richmond Park and Wimbledon Common. Locally there are excellent leisure facilities including Coombe Wood Golf Club and Coombe Hill Golf Club. The area is well renowned for its excellent schools including Rokeby and Kings College.

Features

- Five Double Bedrooms
- Two Reception Rooms
- Kitchen/Dining Room
- Utility/Cloakroom
- Three Bath/Shower Rooms
- Off-Street Parking



Windermere Road, SW15

The ground floor accommodation consists of a large entrance hall with a storage cupboard and staircase leading to the first floor landing, two reception rooms, a spectacular extended kitchen/dining/living room with distinct living and dining areas with bi-fold doors leading to the rear garden and a recessed open plan fitted kitchen with integrated appliances and a separate utility/cloakroom.

The first floor accommodation consists of a large landing with a storage cupboard and staircase leading to the second floor landing, a master double bedroom with a modern and contemporary styled ensuite shower room, three further double bedrooms a modern and contemporary styled family bathroom.

The second floor accommodation consists of a landing providing access to eaves storage space, a double bedroom with a fitted wardrobe and a modern and contemporary styled ensuite shower room and a separate loft room.

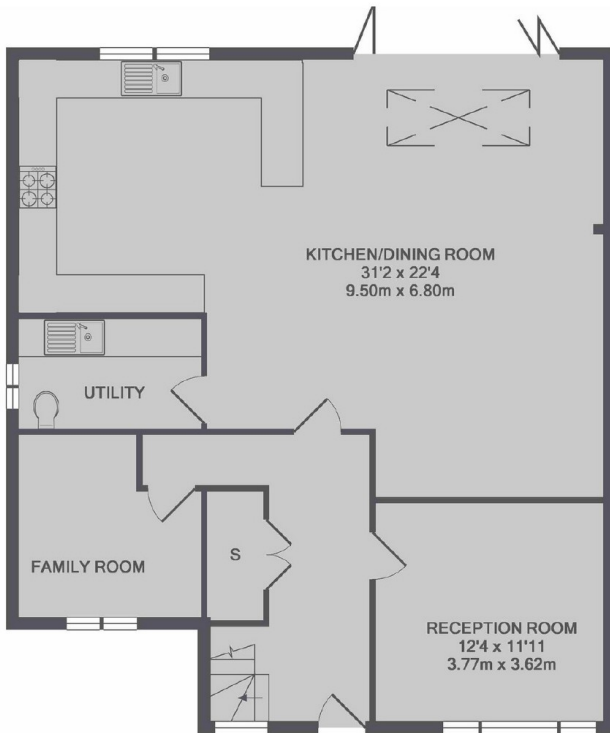
Outside to the front is a garden which is mostly laid to stone gravel providing off street parking for two vehicles, a wooden gate provides side access to the rear. To the rear is a large garden which is mostly laid to lawn with a large patio area.



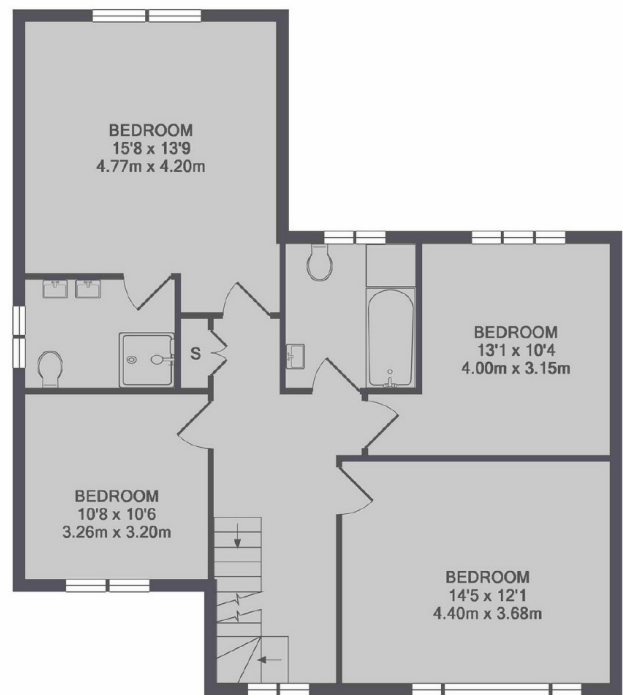
Windermere Road, London, SW15



2ND FLOOR



GROUND FLOOR



1ST FLOOR

TOTAL APPROX. FLOOR AREA 2376 SQ.FT. (220.7 SQ.M.)