



Winchilsea Crescent, KT8

£875,000

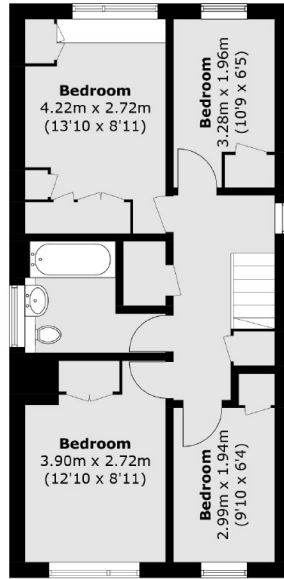
This is a four bedroom end of terrace house that makes the ideal family home. With well proportioned rooms, a sunny South facing garden, off street parking and a garage, we are eager to arrange for you to take a look.

Winchilsea Crescent is close to Hampton Court station with its services into London Waterloo. Nearby parks including Hurst Park and Hurst Meadows, recreational pursuits including the River Thames, Bushy Park and Hampton Court Palace are also close by.

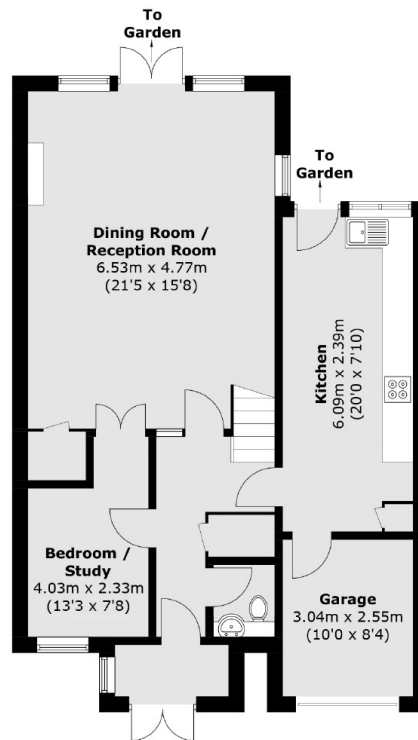
Features

- Four Bedrooms
- End Of Terrace
- Off Street Parking
- Garage
- Study
- South Facing Garden

Winchilsea Crescent, West Molesey, KT8



First Floor



Ground Floor

Total area (approx.): 128.8 sq. m (1,386.4 sq. ft)