



Summer Avenue, KT8

£899,950

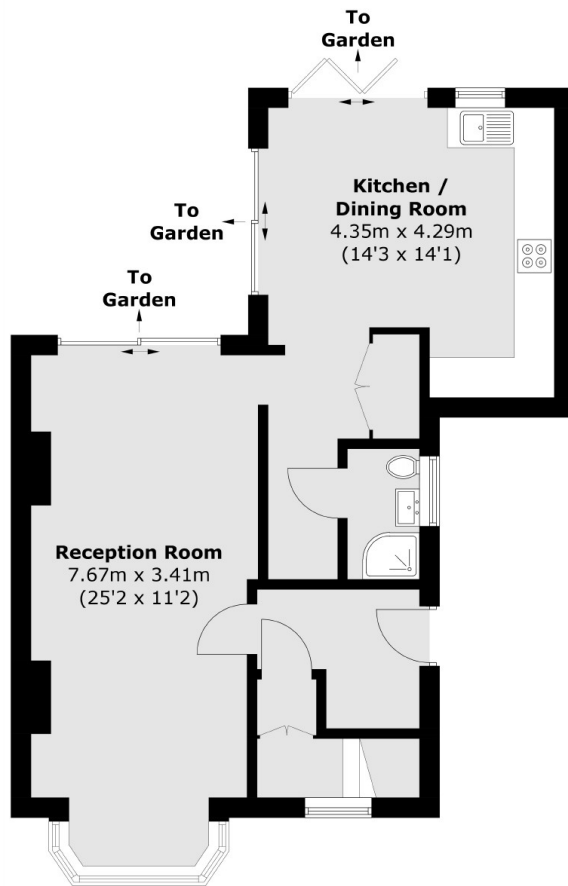
We think this three bedroom semi detached house overlooking the sports grounds makes a brilliant buy. With scope to further extend (subject to planning permission) and no onward chain, we are eager to arrange for you to view.

Summer Avenue is located close to the boutiques, restaurants and cafés of Hampton Court Village as well as it's excellent transport links and access to the River Thames. Bushy Park and The Palace are also within easy reach.

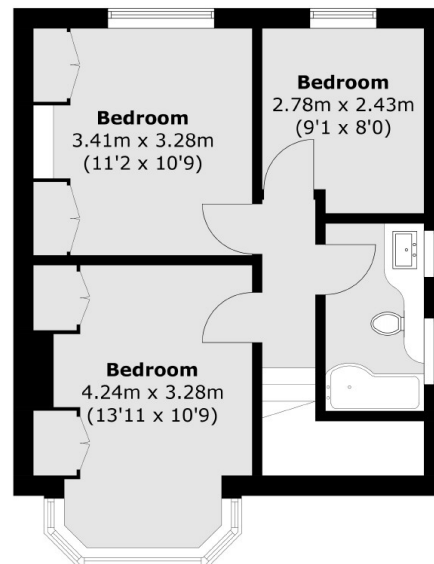
Features

- Three Bedrooms
- Two Bathrooms
- Semi Detached
- 1930s Build
- Recently Renovated
- Private Garden

Summer Avenue, East Molesey, KT8



Ground Floor



First Floor

Total area (approx.): 101.0 sq. m (1,087.1 sq. ft)