



Rectory Grove, TW12

£699,750

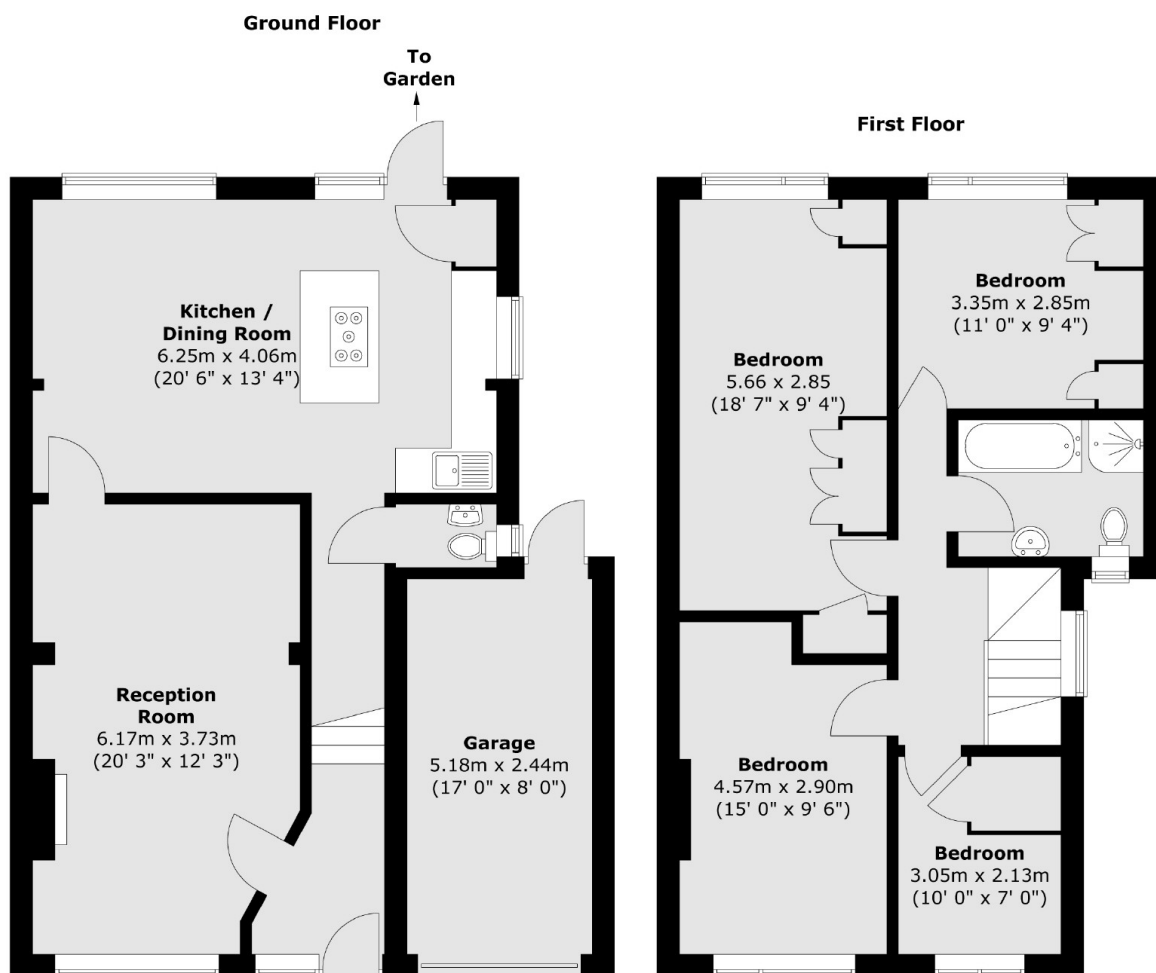
This four bedroom semi detached house has been extended to the rear and offers plenty of space for the family to grow. It comes with a garage, off street parking and we are keen for you to view.

Rectory Grove is located within the popular 'Poets' development in Hampton, a choice of state and private schools are all within walking distance. Bus routes, local parks, Hampton High Street, and Bushy Park are all nearby.

Features

- Four Bedrooms
- Semi Detached
- Off Street Parking
- Garage
- Private Garden
- Rear Extended

Rectory Grove, Hampton, TW12



Total area (approx.) : 115.6 sq. m (1244 sq. ft)
Total garage area (approx.) : 13 sq. m (140 sq. ft)