



## Hampton, TW12

£499,950

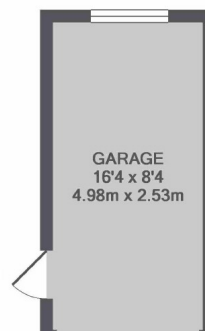
This semi-detached house is ready to move in to but still allows for you to put your own mark on it. It ticks box after box for the modern family, and we know that it won't hang around for long!

Located in a popular residential area, Rectory Grove is conveniently situated with Bushy Park, local schools and bus stops all within walking distance.

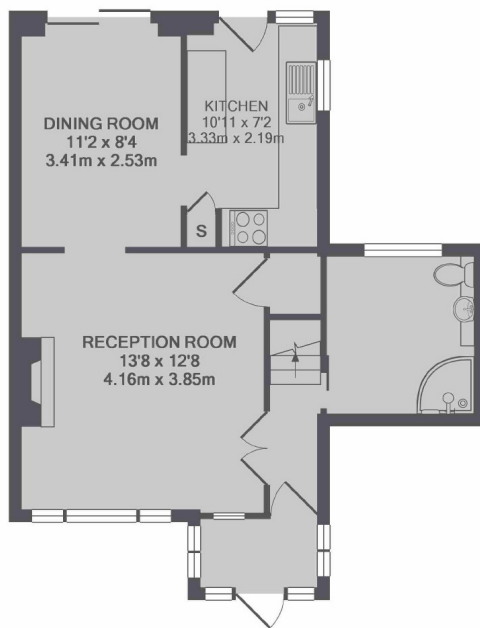
### Features

- Three Bedrooms
- Downstairs Wet Room
- Blank Canvas
- West Facing Garden
- Off-Street Parking
- No Onward Chain

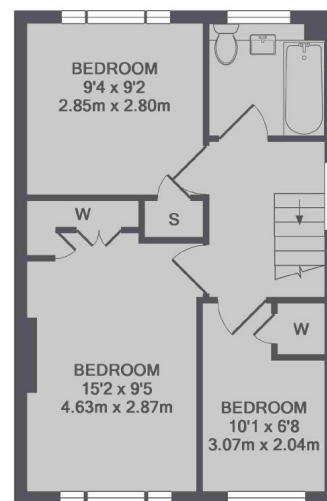
## Rectory Grove, Hampton, TW12



GARAGE



GROUND FLOOR



1ST FLOOR

TOTAL APPROX. FLOOR AREA 883 SQ.FT. (82.0 SQ.M.)  
GARAGE APPROX. FLOOR AREA 136 SQ.FT. (12.6 SQ.M.)

### Contact

To arrange a viewing call our office on the number below or visit our website.



Energy Rating: . We aim to make our particulars both accurate and reliable. However they are not guaranteed; nor do they form part of an offer or contract. If you require clarification on any points then please contact us, especially if you're traveling some distance to view. Please note that appliances and heating systems have not been tested and therefore no warranties can be given as to their good working order.