



Station Road, TW12

£275,000

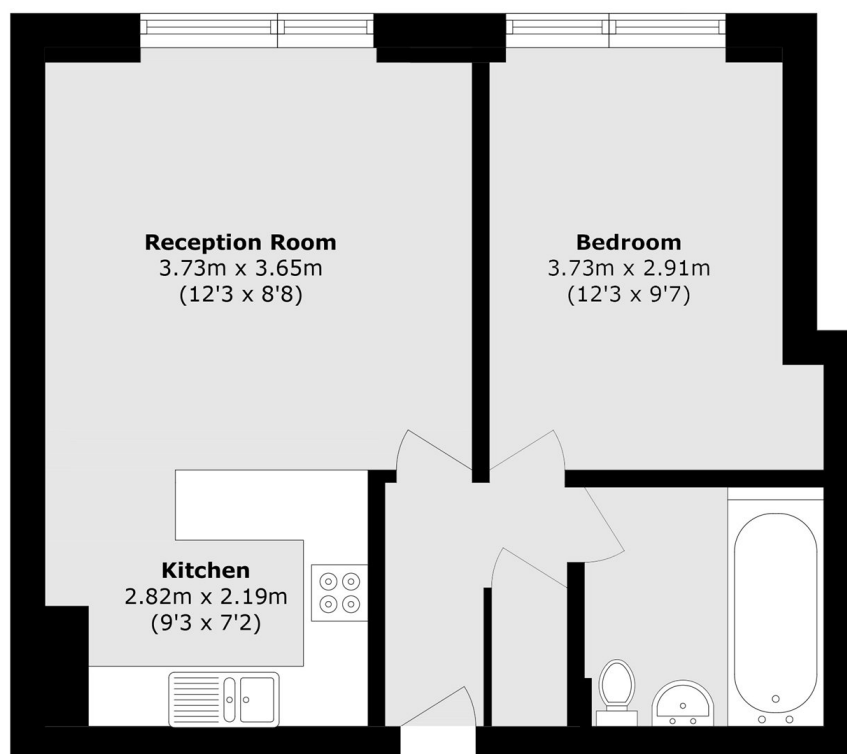
Coming with no onward chain, this is a one bedroom ground floor maisonette that has been recently decorated and makes a brilliant first time buyer or investment. Please do drop us a call to take a look!

Rushbury Court is conveniently located close to local bus routes to Heathrow, and Hampton train station which runs a regular service into London Waterloo. There are a selection of shops and cafés nearby as well as the river and Bushy Park.

Features

- One Bedroom
- Ground Floor Flat
- Communal Garden
- Central Location
- Recently Decorated
- No Onward Chain

Station Road, Hampton, TW12



Total area (approx.): 39.3 sq. m (423.0 sq. ft)