



## Castle Way, TW13

### £425,000

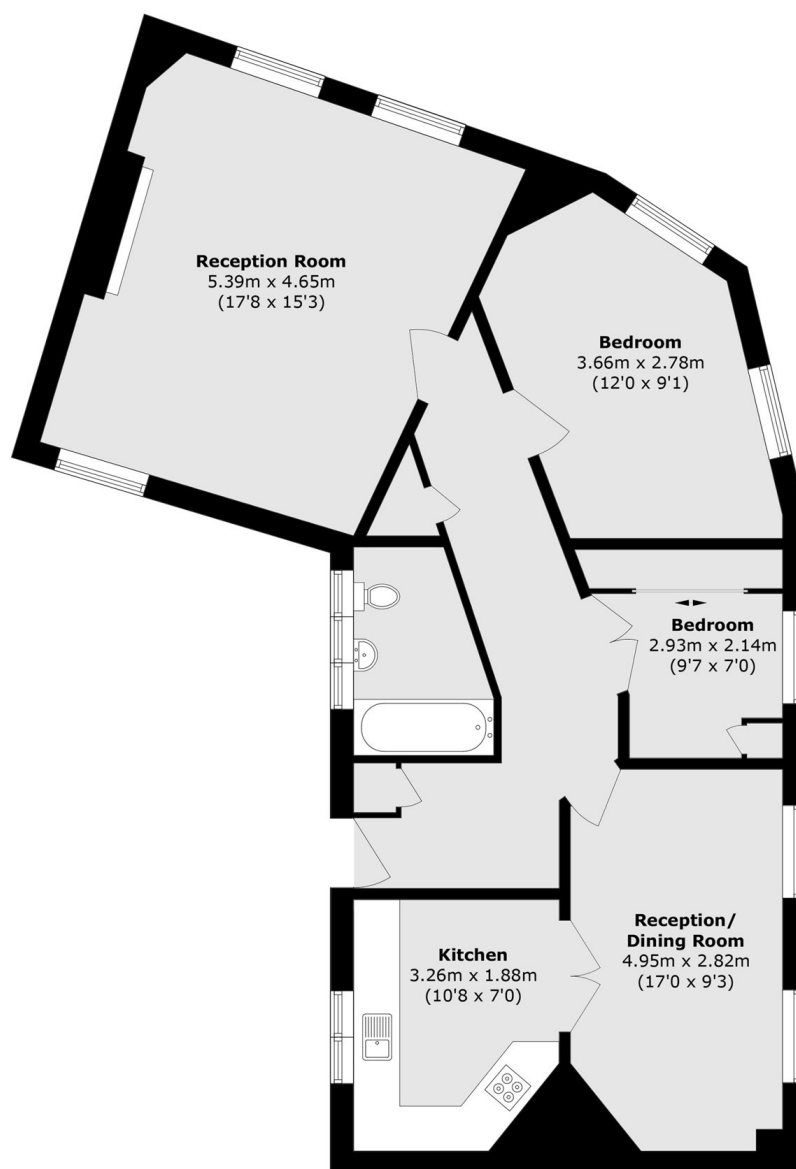
A very pretty, period two bedroom maisonette that comes with the benefit of no onward chain. Having once been used by King Henry VIII as a hunting lodge, if character and history is something that you are looking for then this is the one.

Tudor Court is an impressive development set on the prestigious Hanworth Park Estate. Surrounded by history this property feels like a step back in time.

### Features

- Ground Floor Maisonette
- Communal Gardens
- Tons Of History
- Two Bedrooms
- Long Lease
- No Onward Chain

# Castle Way, Hanworth, TW13



Total area (approx.): 86.2 sq. m (874.0 sq. ft)

## Dexters

Hampton  
93 Station Road  
Hampton  
TW12 2BD  
Sales  
020 8255 7777

Energy Rating: . We aim to make our particulars both accurate and reliable. However they are not guaranteed; nor do they form part of an offer or contract. If you require clarification on any points then please contact us, especially if you're traveling some distance to view. Please note that appliances and heating systems have not been tested and therefore no warranties can be given as to their good working order.

 **RICS** | Regulated  
Estate Agent  
and Letting Agent

dexters.co.uk