



Coombe Crescent, TW12

£879,995

Dexters



Coombe Crescent, TW12

This is an especially large, double fronted four/five bedroom house that comes with a layout that is perfectly tailored to the modern family's needs. We love the quality of the finish, having been completely refurbished and extended, and suspect you will love it too.

Having been extended and remodelled by the current owners, the downstairs layout comprises of a large kitchen diner, multiple reception rooms and a bedroom and en suite bathroom that can be made to feel private to the rest of the house.

The property is set over two floors with the first made up of four bedrooms, an en suite bathroom, and family bathroom. The high spec attention to detail needs to be seen to be appreciated.

To the rear of the house is a wide garden with a patio area, perfect for alfresco dining on a summer evening. The property also comes with off-street parking for multiple cars.

Coombe Crescent is a quiet road close to Hatherop Park, local schools and bus routes to Richmond and Kingston. Hampton Village shops and train station are all close by.

Features

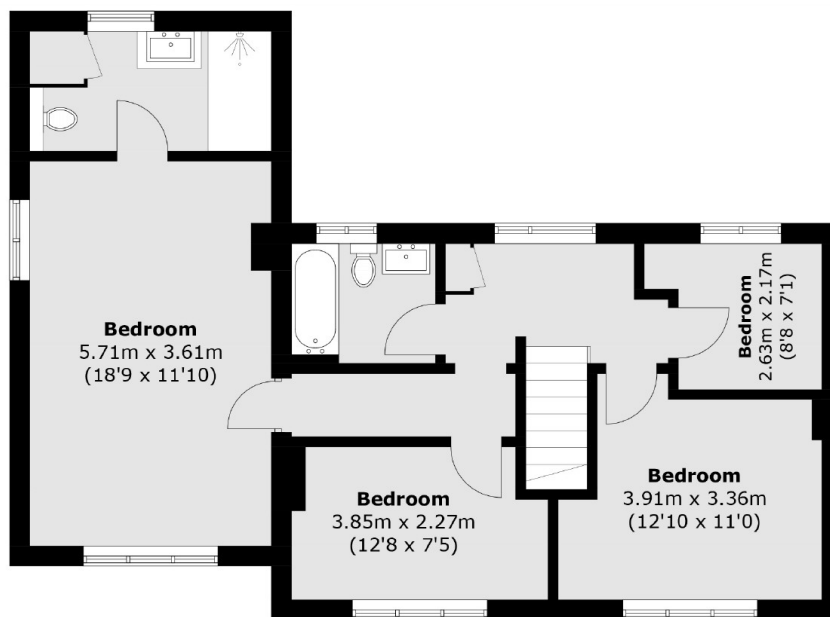
- Four/Five Bedrooms
- Three Bathrooms
- Semi-Detached
- Wide Garden
- Off-Street Parking
- Self Contained Annex



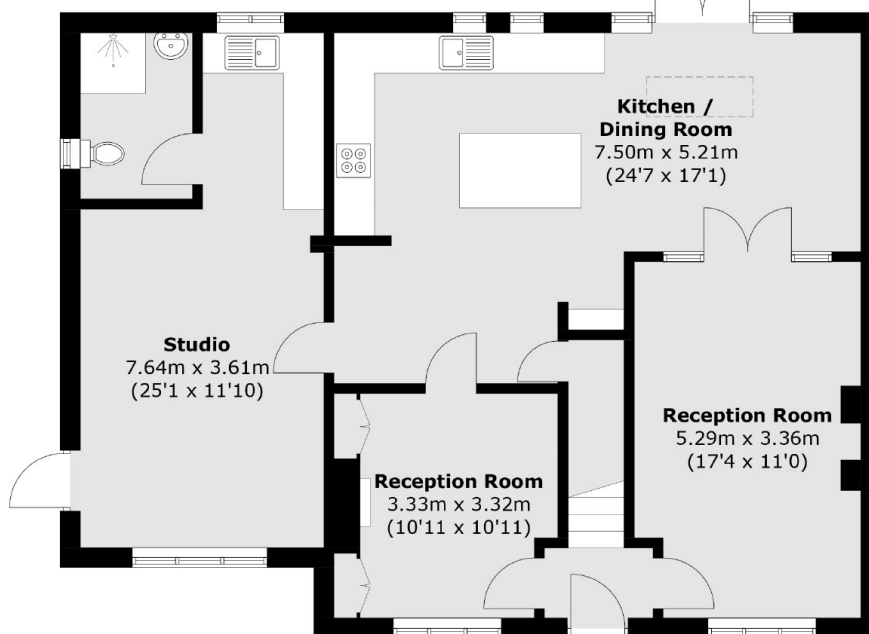




Coombe Crescent, Hampton, TW12



First Floor



Ground Floor

Total area (approx.): 167.4 sq. m (1,801.9 sq. ft)