



Sonning Gardens, TW12

£475,000

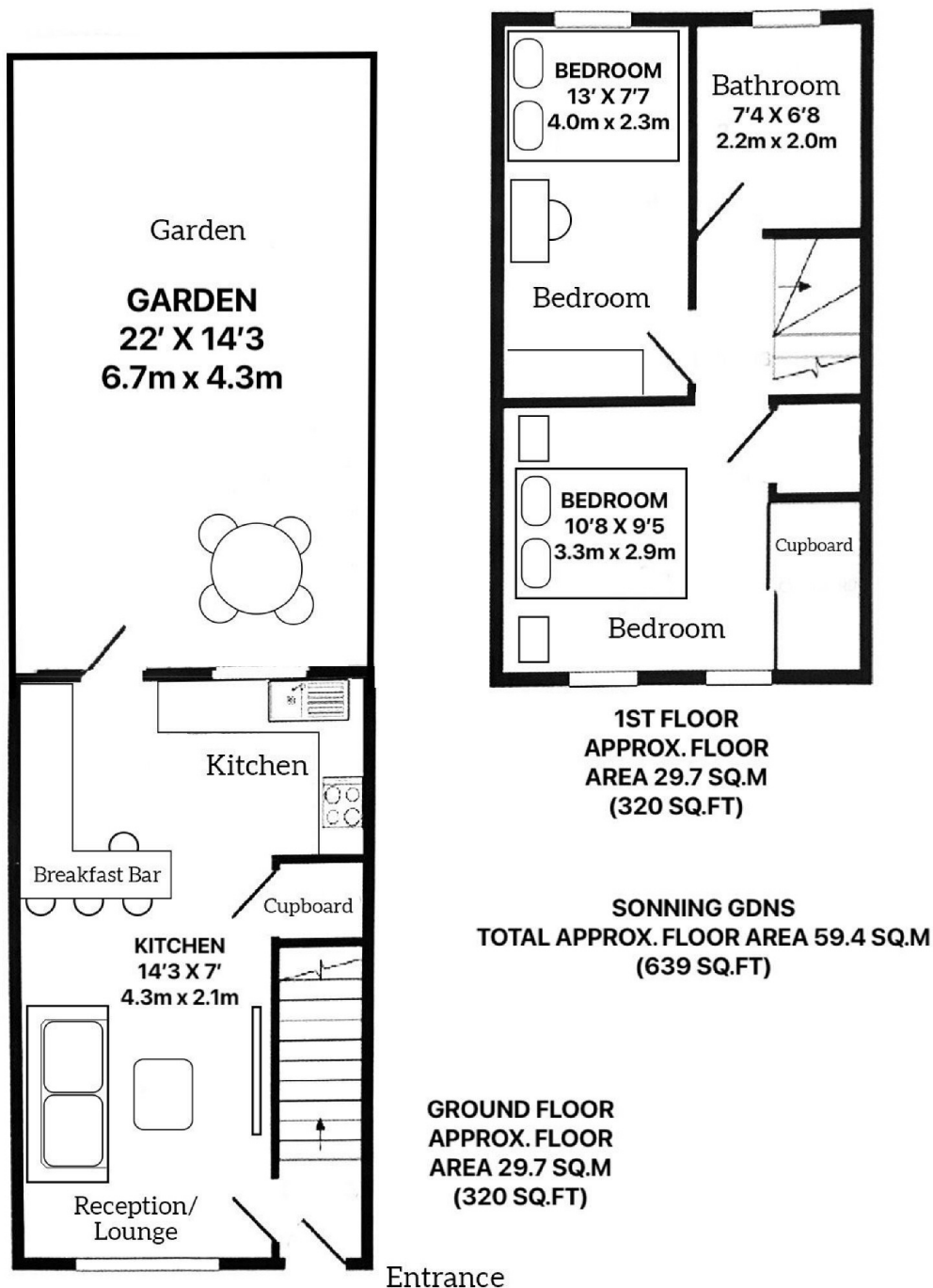
A beautifully presented two bedroom, terraced house coming with a sunny South West facing garden. The property also has allocated parking and makes a brilliant first time buy, downsize, or investment.

Sonning gardens is a quiet cul de sac and is within easy reach of the charming Hampton village and the station. There are regular bus services to Richmond, Twickenham, Teddington, Kingston and Heathrow airport.

Features

- Two Double Bedrooms
- Terraced House
- Well Presented
- South West Facing Garden
- Rear Access
- Allocated Parking

Sonning Gardens, Hampton, TW12



Dexters

Hampton
93 Station Road
Hampton
TW12 2BD
Sales
020 8255 7777

Energy Rating: D. We aim to make our particulars both accurate and reliable. However they are not guaranteed; nor do they form part of an offer or contract. If you require clarification on any points then please contact us, especially if you're traveling some distance to view. Please note that appliances and heating systems have not been tested and therefore no warranties can be given as to their good working order.

RICS Regulated
Estate Agent
and Letting Agent

dexters.co.uk