



## Millbourne Road, TW13

### £575,000

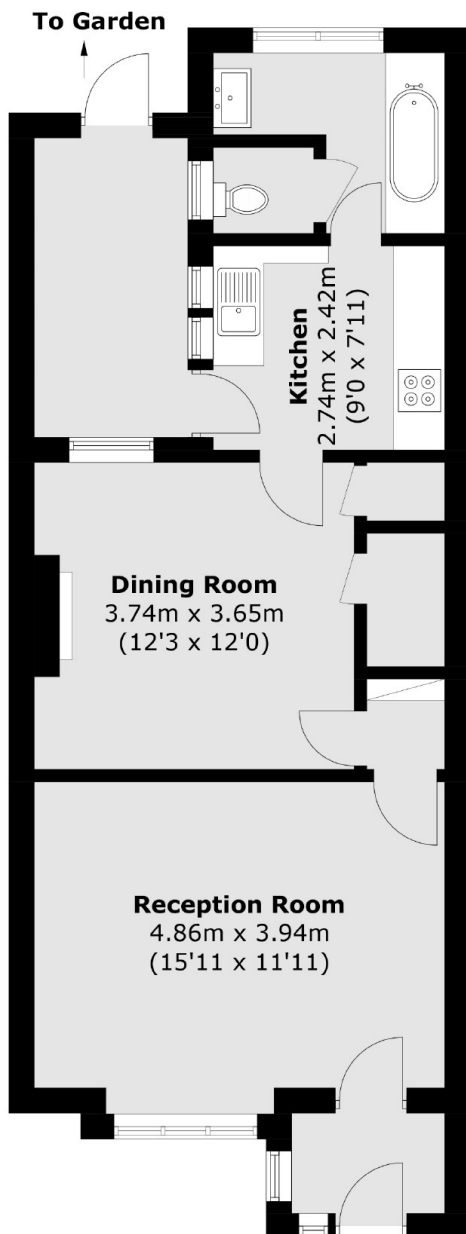
Offered with no onward chain is this spacious four bedroom semi-detached house. It has bags of opportunity to come in and put your own stamp on it with the added potential to extend (STPP) to fully make your own.

Millbourne Road is a quiet road perfectly situated on the Hampton/Hanworth borders. Houses like this normally attract couples, families and investors. Ideal for easy access to the A316, Heathrow and local bus routes are at the end of the road.

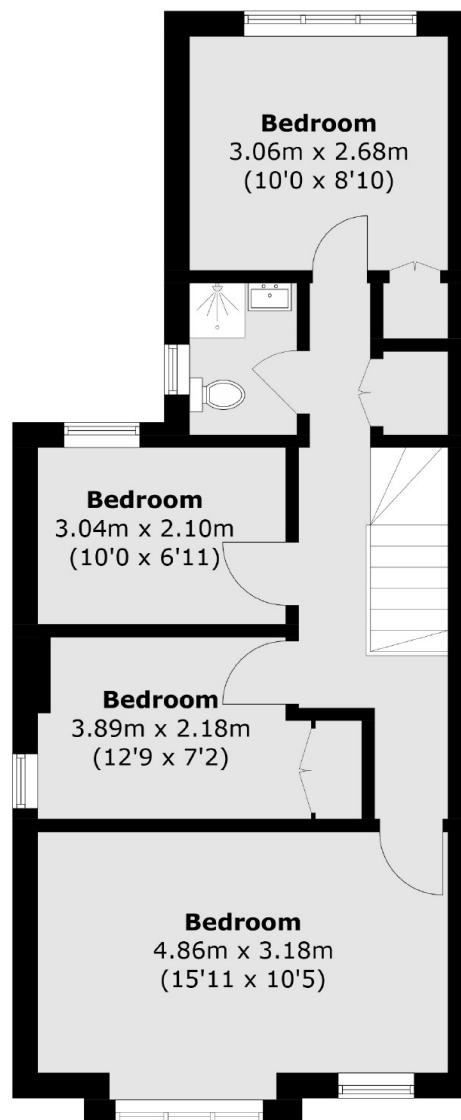
### Features

- Four Bedrooms
- Two Reception Rooms
- Large Garden
- Potential To Extend (STPP)
- No Onward Chain
- Off-Street Parking

# Millbourne Road, Feltham, TW13



**Ground Floor**



**First Floor**

Total area (approx.): 112.8 sq. m (1,214.1 sq. ft)