



Beards Hill, TW12

£350,000

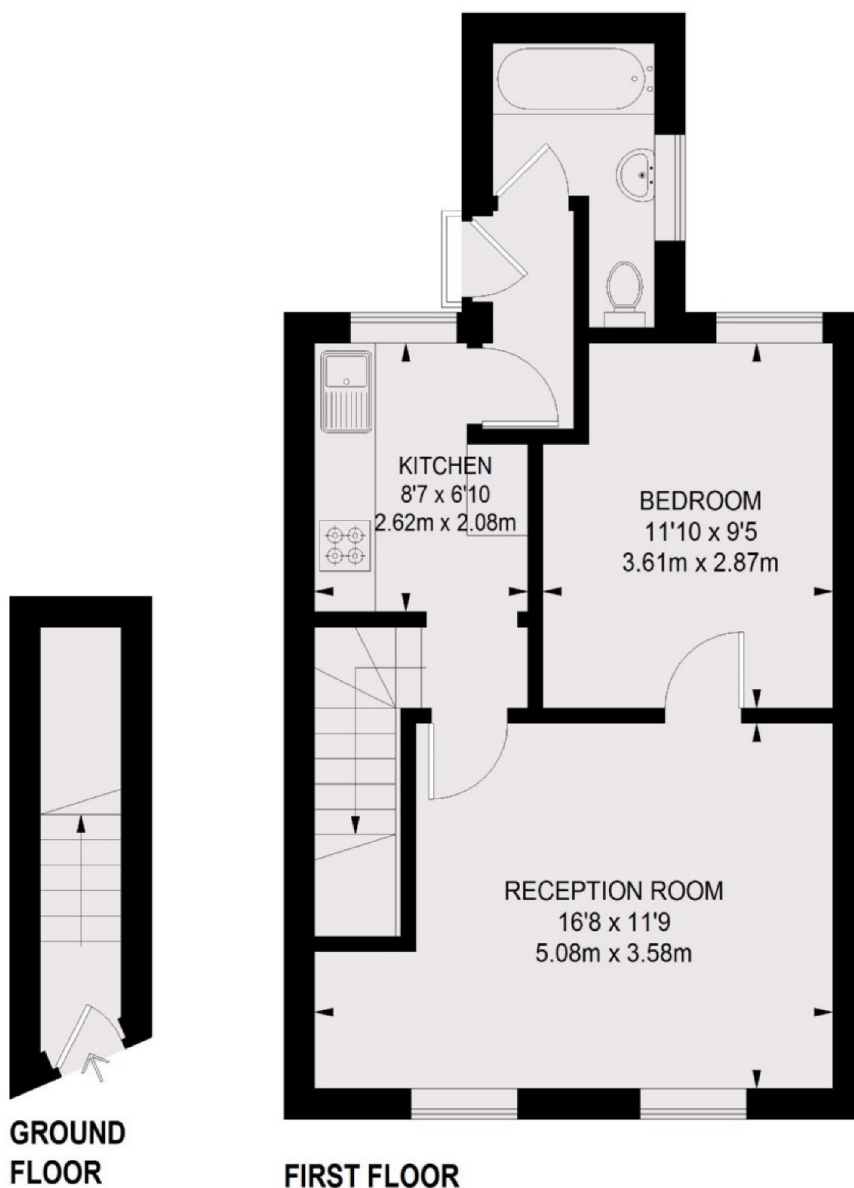
A stylish one bedroom Victorian, first floor, maisonette that is in immaculate condition and comes with a private garden. When are you free to take a look?

Found just off Oldfield Road, Beards Hill is an ideal location - minutes walk to the local shops, the train station, and Hampton Green at the heart of the village.

Features

- One Bedroom
- First Floor Maisonette
- Victorian
- Private Garden
- Well Presented
- Cul De Sac

Beards Hill, Hampton, TW12



TOTAL APPROX. FLOOR AREA
486 SQ. FT. (45.1 SQ. M.)

Dexters

Hampton
93 Station Road
Hampton
TW12 2BD
Sales
020 8255 7777

Energy Rating: C. We aim to make our particulars both accurate and reliable. However they are not guaranteed; nor do they form part of an offer or contract. If you require clarification on any points then please contact us, especially if you're traveling some distance to view. Please note that appliances and heating systems have not been tested and therefore no warranties can be given as to their good working order.

 **RICS** | Regulated
Estate Agent
and Letting Agent

[dexters.co.uk](https://www.dexters.co.uk)