



Upper Sunbury Road, TW12

£650,000

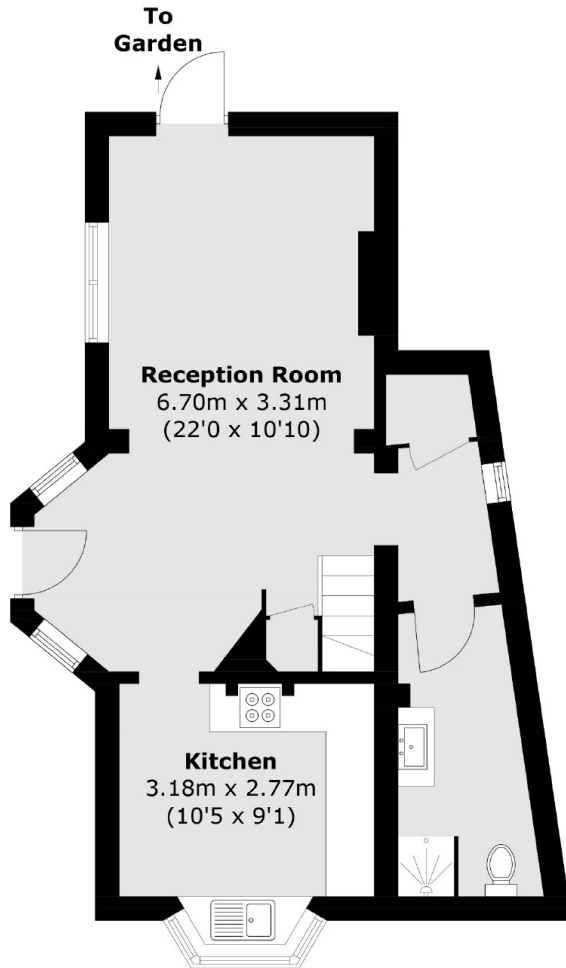
"The Lodge" is a characterful, two bedroom detached house. We think it is charming; with two bedrooms, tons period features, off street parking and a private garden. Also benefitting from no onward chain.

Upper Sunbury Road is located a short walk away from Hampton Village and the train station. There are a great selection of local schools nearby as well as Bushy Park and the River Thames.

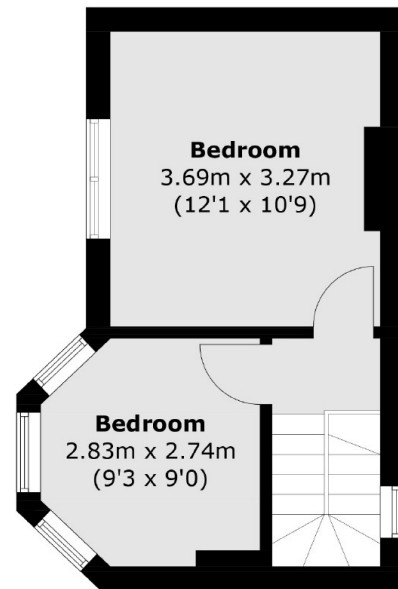
Features

- Detached
- Victorian
- Two Bedrooms
- Off Street Parking
- Private Garden
- No Onward Chain

Upper Sunbury Road, Hampton, TW12



Ground Floor



First Floor

Total area (approx.): 69.1 sq. m (743.8 sq. ft)