



High Street, TW12

£795,000

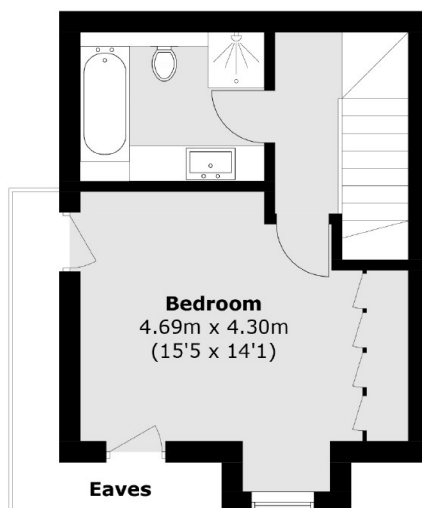
Set in the Coach House is this three bedroom flat. Beautifully finished, over three floors and with views over Bushy Park, this former WWI drill hall blends period charm with modern style in a prime location.

Located on Hampton Hill High Street, everything you need is on your doorstep - local shops, restaurants and cafés, bus routes, Fulwell station and Bushy Park.

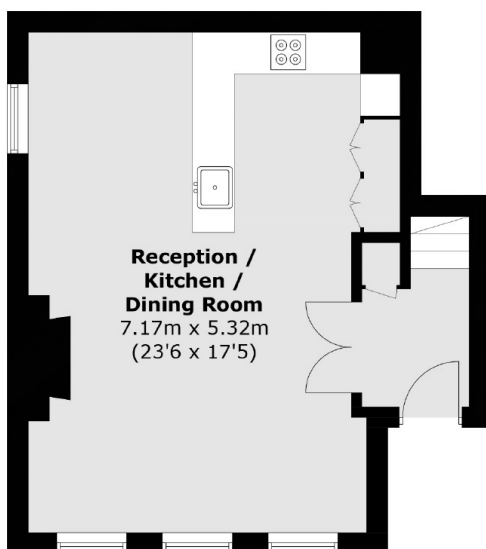
Features

- Three Bedrooms
- Gated Parking
- Share Of Freehold
- Views Over Bushy Park
- Modern Finish
- Characterful Building

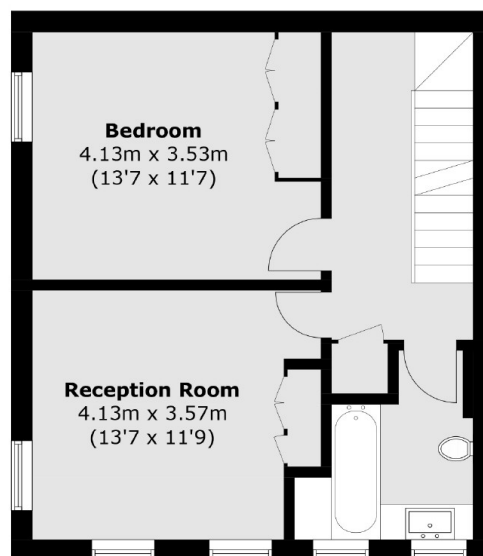
High Street, Hampton, TW12



Second Floor



Ground Floor



First Floor

Total area (approx.): 114.6 sq. m (1,233.5 sq. ft)
(Excluding Eaves)