



Dyas Road, TW16

£1,895 Per calendar month

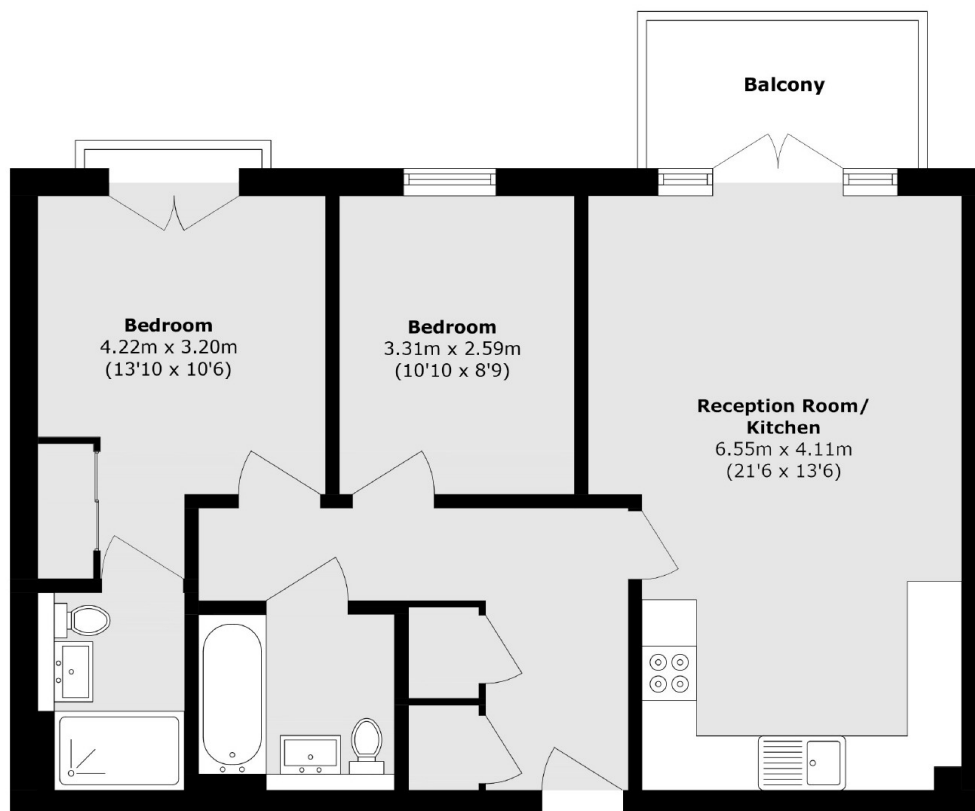
A two double bedroom modern apartment within the highly sought after Park Avenue Development. The property is finished to a high standard throughout and has excellent entertaining space.

Hazelwood House is a modern development built by Crest Nicholson and located in the heart of Lower Sunbury. Sunbury Station, Sunbury Park and the River Thames are all within half a mile with Nuffield Health Club right on your doorstep.

Features

- Modern Development
- Two Double Bedrooms
- Open Plan Kitchen
- Unfurnished
- Underground Parking Space
- Balcony

Dyas Road,
Sunbury-On-Thames, TW16



Total area (approx.): 66.6 sq. m (716.8 sq. ft)

Balcony area (approx.): 4.8 sq. m (51.6 sq. ft)