



High Street, TW12

£440,000

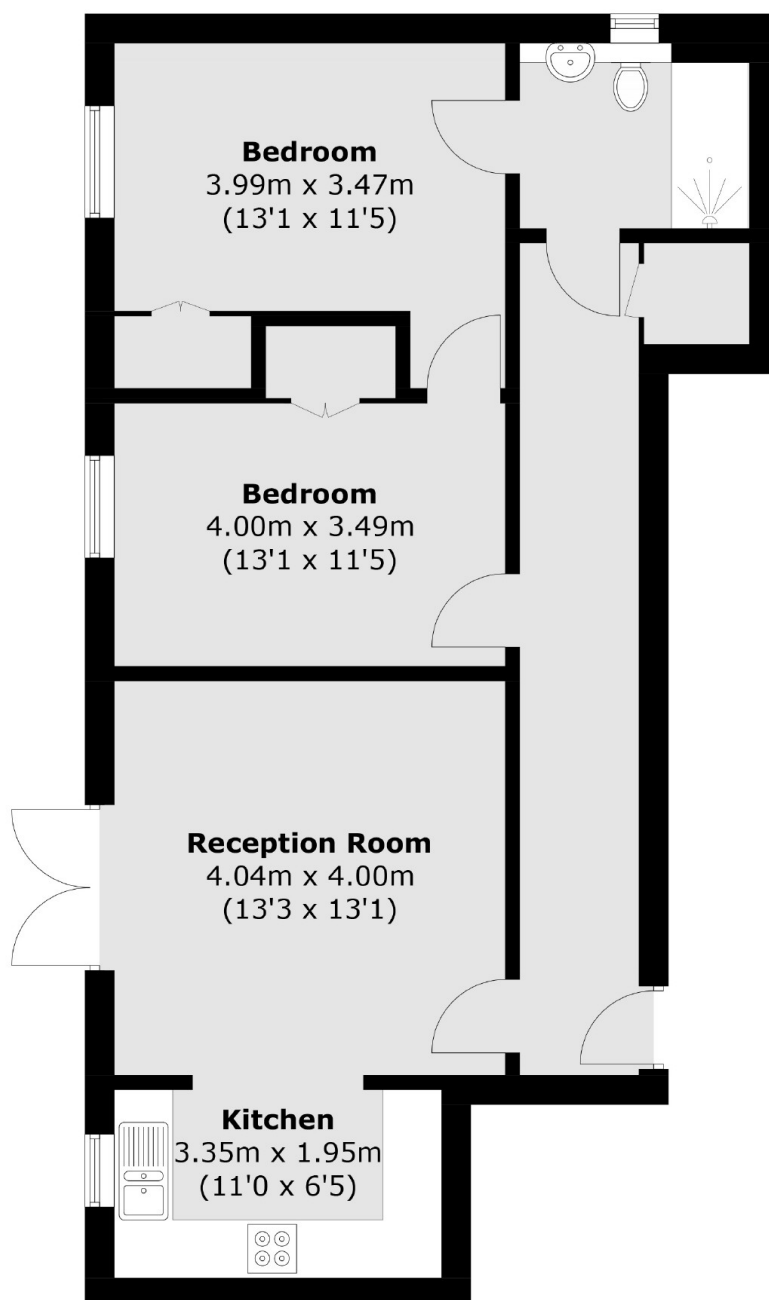
A spacious ground floor apartment set in delightful landscaped gardens with a private patio garden. The developers designed this exclusive development to suit the needs of home buyers over the age of 55 to ensure a peaceful lifestyle.

Conveniently located in the heart of Hampton Hill with an excellent selection of shops and restaurants. Fulwell Golf Club and station (regular service to London Waterloo) are on the door step, as is access to Bushy Park.

Features

- Two Bedrooms
- Ground Floor Flat
- Patio Garden
- Communal Gardens
- Over 55s Development
- No Onward Chain

High Street, Hampton Hill, TW12



Total area (approx.): 67.6 sq. m (727.6 sq. ft)

Dexters

Hampton
93 Station Road
Hampton
TW12 2BD
Sales
020 8255 7777

Energy Rating: B. We aim to make our particulars both accurate and reliable. However they are not guaranteed; nor do they form part of an offer or contract. If you require clarification on any points then please contact us, especially if you're traveling some distance to view. Please note that appliances and heating systems have not been tested and therefore no warranties can be given as to their good working order.

 **RICS** | Regulated
Estate Agent
and Letting Agent

[dexters.co.uk](https://www.dexters.co.uk)